

# Keysight U2761A USB Modular Function/Arbitrary Waveform Generator



NOTICE: This document contains references to Agilent Technologies. Agilent's former Test and Measurement business has become Keysight Technologies. For more information, go to [www.keysight.com](http://www.keysight.com).



# Notices

## Copyright Notice

© Keysight Technologies 2008 - 2017  
No part of this manual may be reproduced in any form or by any means (including electronic storage and retrieval or translation into a foreign language) without prior agreement and written consent from Keysight Technologies as governed by United States and international copyright laws.

## Trademarks

Pentium is a U.S. registered trademark of Intel Corporation.

Microsoft, Visual Studio, Windows, and MS Windows are trademarks of Microsoft Corporation in the United States and/or other countries.

## Manual Part Number

U2761-90000

## Edition

Edition 10, June 1, 2017

## Printed in:

Printed in Malaysia

## Published by:

Keysight Technologies  
Bayan Lepas Free Industrial Zone,  
11900 Penang, Malaysia

## Technology Licenses

The hardware and/or software described in this document are furnished under a license and may be used or copied only in accordance with the terms of such license.

## Declaration of Conformity

Declarations of Conformity for this product and for other Keysight products may be downloaded from the Web. Go to <http://www.keysight.com/go/conformity>. You can then search by product number to find the latest Declaration of Conformity.

## U.S. Government Rights

The Software is "commercial computer software," as defined by Federal Acquisition Regulation ("FAR") 2.101. Pursuant to FAR 12.212 and 27.405-3 and Department of Defense FAR Supplement ("DFARS") 227.7202, the U.S. government acquires commercial computer software under the same terms by which the software is customarily provided to the public. Accordingly, Keysight provides the Software to U.S. government customers under its standard commercial license, which is embodied in its End User License Agreement (EULA), a copy of which can be found at <http://www.keysight.com/find/sweula>. The license set forth in the EULA represents the exclusive authority by which the U.S. government may use, modify, distribute, or disclose the Software. The EULA and the license set forth therein, does not require or permit, among other things, that Keysight: (1) Furnish technical information related to commercial computer software or commercial computer software documentation that is not customarily provided to the public; or (2) Relinquish to, or otherwise provide, the government rights in excess of these rights customarily provided to the public to use, modify, reproduce, release, perform, display, or disclose commercial computer software or commercial computer software documentation. No additional government requirements beyond those set forth in the EULA shall apply, except to the extent that those terms, rights, or licenses are explicitly required from all providers of commercial computer software pursuant to the FAR and the DFARS and are set forth specifically in writing elsewhere in the EULA. Keysight shall be under no obligation to update, revise or otherwise modify the Software. With respect to any technical data as defined by FAR 2.101, pursuant to FAR 12.211 and 27.404.2 and DFARS 227.7102, the U.S. government acquires no greater than Limited Rights as defined in FAR 27.401 or DFAR 227.7103-5 (c), as applicable in any technical data.

## Warranty

THE MATERIAL CONTAINED IN THIS DOCUMENT IS PROVIDED "AS IS," AND IS SUBJECT TO BEING CHANGED, WITHOUT NOTICE, IN FUTURE EDITIONS. FURTHER, TO THE MAXIMUM EXTENT PERMITTED BY APPLICABLE LAW, KEYSIGHT DISCLAIMS ALL WARRANTIES, EITHER EXPRESS OR IMPLIED, WITH REGARD TO THIS MANUAL AND ANY INFORMATION CONTAINED HEREIN, INCLUDING BUT NOT LIMITED TO THE IMPLIED WARRANTIES OF MERCHANTABILITY AND FITNESS FOR A PARTICULAR PURPOSE. KEYSIGHT SHALL NOT BE LIABLE FOR ERRORS OR FOR INCIDENTAL OR CONSEQUENTIAL DAMAGES IN CONNECTION WITH THE FURNISHING, USE, OR PERFORMANCE OF THIS DOCUMENT OR OF ANY INFORMATION CONTAINED HEREIN. SHOULD KEYSIGHT AND THE USER HAVE A SEPARATE WRITTEN AGREEMENT WITH WARRANTY TERMS COVERING THE MATERIAL IN THIS DOCUMENT THAT CONFLICT WITH THESE TERMS, THE WARRANTY TERMS IN THE SEPARATE AGREEMENT SHALL CONTROL.

## Safety Information

### CAUTION













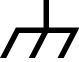



A CAUTION notice denotes a hazard. It calls attention to an operating procedure, practice, or the like that, if not correctly performed or adhered to, could result in damage to the product or loss of important data. Do not proceed beyond a CAUTION notice until the indicated conditions are fully understood and met.

### WARNING

A WARNING notice denotes a hazard. It calls attention to an operating procedure, practice, or the like that, if not correctly performed or adhered to, could result in personal injury or death. Do not proceed beyond a WARNING notice until the indicated conditions are fully understood and met.

## Safety Symbols

The following symbols on the instrument and in the documentation indicate precautions which must be taken to maintain safe operation of the instrument.

	Direct current (DC)		Equipment protected throughout by double insulation or reinforced insulation
	Alternating current (AC)		Off (mains supply)
	Both direct and alternating current		On (mains supply)
	Three-phase alternating current		Caution, risk of electric shock
	Earth (ground) terminal		Caution, risk of danger (refer to this manual for specific Warning or Caution information)
	Protective earth (ground) terminal		Caution, hot surface
	Frame or chassis (ground) terminal		Out position of a bi-stable push control
	Equipotentiality		In position of a bi-stable push control

## General Safety Information

The following general safety precautions must be observed during all phases of operation of this instrument. Failure to comply with these precautions or with specific warnings elsewhere in this manual violates safety standards of design, manufacture and intended use of the instrument. Keysight Technologies assumes no liability for the customer's failure to comply with these requirements.

### WARNING

- Do not operate the product in an explosive atmosphere or in the presence of flammable gases or fumes.
  - Do not use the equipment if it does not operate properly. Have the equipment inspected by qualified service personnel(s).
- 

### CAUTION

- Observe all markings on the instrument before connecting any wiring to the instrument.
  - Use the device with the cables provided.
  - Repair or service that is not covered in this manual should only be performed by qualified personnel(s).
-

## Environmental Conditions

This instrument is designed for indoor use and in the area with low condensation. The table below shows the general environmental requirements for this instrument.





Environmental condition	Requirement
Operating temperature	0 °C to 50 °C
Operating humidity	20 to 85% RH non-condensing
Storage temperature	-20 °C to 70 °C
Storage humidity	5 to 90% RH non-condensing

### CAUTION

The U2761A USB modular function/arbitrary waveform generator complies with the following safety and EMC requirements.

- IEC 61010-1:2001/EN61010-1:2001 (2nd Edition)
- Canada: CAN/CSA-C22.2 No. 61010-1-04
- USA: ANSI/UL 61010-1:2004
- IEC 61326-2002/EN 61326:1997+A1:1998+A2:2001+A3:2003
- Canada: ICES-001:2004
- Australia/New Zealand: AS/NZS CISPR11:2004

## Regulatory Markings

	<p>The CE mark is a registered trademark of the European Community. This CE mark shows that the product complies with all the relevant European Legal Directives.</p>		<p>The RCM mark is a registered trademark of the Australian Communications and Media Authority.</p>
<p><b>ICES/NMB-001</b></p>	<p>ICES/NMB-001 indicates that this ISM device complies with the Canadian ICES-001. Cet appareil ISM est conforme a la norme NMB-001 du Canada.</p>		<p>This instrument complies with the WEEE Directive (2002/96/EC) marking requirement. This affixed product label indicates that you must not discard this electrical or electronic product in domestic household waste.</p>
	<p>The CSA mark is a registered trademark of the Canadian Standards Association.</p>		



## Waste Electrical and Electronic Equipment (WEEE) Directive 2002/96/EC

This instrument complies with the WEEE Directive (2002/96/EC) marking requirement. This affixed product label indicates that you must not discard this electrical or electronic product in domestic household waste.

### Product category:

With reference to the equipment types in the WEEE directive Annex 1, this instrument is classified as a “Monitoring and Control Instrument” product.

The affixed product label is as shown below.



Do not dispose in domestic household waste.

To return this unwanted instrument, contact your nearest Keysight Service Center, or visit <http://about.keysight.com/en/companyinfo/environment/takeback.shtml> for more information.

## Sales and Technical Support

To contact Keysight for sales and technical support, refer to the support links on the following Keysight websites:

- [www.keysight.com/find/U2761A](http://www.keysight.com/find/U2761A)  
(product-specific information and support, software and documentation updates)
- [www.keysight.com/find/assist](http://www.keysight.com/find/assist)  
(worldwide contact information for repair and service)

THIS PAGE HAS BEEN INTENTIONALLY LEFT BLANK.

# Table of Contents

Safety Symbols	5
General Safety Information	6
Environmental Conditions	7
Regulatory Markings	8
Waste Electrical and Electronic Equipment (WEEE) Directive	
2002/96/EC	9
Product category:	9
Sales and Technical Support	9
<b>1 Getting Started</b>	
Introduction	20
Product at a Glance	21
Product Outlook	21
Product Dimensions	23
Dimensions Without Bumpers	23
Dimensions With Bumpers	24
Standard Purchase Items	25
Inspection and Maintenance	26
Initial Inspection	26
Electrical Check	26
General Maintenance	26
Installation and Configuration	27
55-Pin Backplane Connector Pin Configuration	28
Chassis Installation	29
Activate Your Device License	30
To Activate Your Device License	30
To Verify your Device License	32
<b>2 Features and Functions</b>	
Output Configuration	34

Introduction	34
Output Function	34
Output Frequency	37
Output Amplitude	39
DC Offset Voltage	41
Output Units	42
Output Termination	43
Duty Cycle (Square Waves)	45
Symmetry (Ramp Wave)	47
Output Control	48
Set Output Using SCPI Commands	49
Pulse Waveform	51
Pulse Period	51
Pulse Width	52
Pulse Duty Cycle	53
Generate Pulse Waveform Using SCPI Commands	54
Amplitude Modulation (AM)	55
To Select AM	55
Carrier Waveform	56
Carrier Frequency	57
Modulating Waveform	58
Modulating Waveform Frequency	59
Modulation Depth	59
Generate AM Using SCPI Commands	60
Frequency Modulation (FM)	61
To Select FM	61
Carrier Waveform	62
Carrier Frequency	63
Modulating Waveform	64
Modulating Waveform Frequency	64
Frequency Deviation	65
Generate FM Using SCPI Commands	66
Phase Modulation (PM)	67
To Select PM	67
Carrier Waveform	68

Carrier Frequency	69
Modulating Waveform	70
Modulating Waveform Frequency	70
Phase Deviation	71
Generate PM Using SCPI Commands	71
Frequency-Shift Keying (FSK) Modulation	72
To Select FSK Modulation	72
Carrier Waveform	73
FSK Carrier Frequency	74
FSK “Hop” Frequency	75
FSK Rate	76
Generate FSK Modulation Using SCPI Commands	76
Phase-Shift Keying (PSK) Modulation	77
To Select PSK Modulation	77
Carrier Waveform	78
PSK Carrier Frequency	79
PSK Rate	80
PSK Deviation	80
Generate PSK Modulation Using SCPI Commands	81
Amplitude-Shift Keying (ASK) Modulation	82
To Select ASK Modulation	82
Carrier Waveform	83
Carrier Frequency	84
ASK Rate	85
Generate ASK Modulation Using SCPI Commands	85
Frequency Sweep	86
To Select Sweep	86
Start Frequency and Stop Frequency	87
Sweep Mode	88
Sweep Time	88
Sweep Trigger Source	89
Set Frequency Sweep Using SCPI Commands	90
Triggering	91
Trigger Source Choices	91

Internal Triggering .....	92
Manual Triggering .....	92
External Triggering .....	93
Trigger Input Signal .....	94
Trigger Output Signal .....	94
Set Triggering Using SCPI Commands .....	96
Arbitrary Waveforms .....	97
To Create and Store an Arbitrary Waveform .....	97

### 3 Characteristics and Specifications

#### Index

## List of Figures

Figure 1-1	55-pin backplane connector pin configuration	28
Figure 2-1	U2761A soft front panel	36
Figure 2-2	Top panel view of the U2761A	37
Figure 2-3	Panel view of the frequency section	38
Figure 2-4	Panel view of the amplitude section	40
Figure 2-5	Panel view of the DC offset section	41
Figure 2-6	Panel view of the Tools menu	44
Figure 2-7	Square wave duty cycles	45
Figure 2-8	Panel view of the duty cycle section	46
Figure 2-9	Ramp wave duty cycles	47
Figure 2-10	Panel view of the symmetry section	47
Figure 2-11	Panel view of the output section	48
Figure 2-12	Pulse waveform	51
Figure 2-13	Panel view of the pulse width section	52
Figure 2-14	AM waveform	55
Figure 2-15	Panel view of AM	56
Figure 2-16	Panel view of the Arbitrary waveform	57
Figure 2-17	FM waveform	61
Figure 2-18	Panel view of FM	62
Figure 2-19	PM waveform	67
Figure 2-20	Panel view of PM	68
Figure 2-21	FSK modulation waveform	72
Figure 2-22	Panel view of FSK	73
Figure 2-23	PSK modulation waveform	77
Figure 2-24	Panel view of PSK	78
Figure 2-25	ASK modulation waveform	82
Figure 2-26	Panel view of ASK	83
Figure 2-27	Frequency sweep	86
Figure 2-28	Panel view of sweep	87
Figure 2-29	Trigger input pulse	94
Figure 2-30	Trigger output pulse	94
Figure 2-31	Ramp waveform	97
Figure 2-32	Waveform download in progress	99

THIS PAGE HAS BEEN INTENTIONALLY LEFT BLANK.



## List of Tables

Table 1-1	Synchronous Simultaneous Interface (SSI) connector pin description	28
Table 2-1	Output functions	34
Table 2-2	Output frequency range	37
Table 2-3	Carrier frequency for AM	57
Table 2-4	Carrier frequency for FM	63
Table 2-5	Carrier frequency for PM	69
Table 2-6	Carrier frequency for FSK	74
Table 2-7	“Hop” frequency	75
Table 2-8	Carrier frequency for PSK	79
Table 2-9	Carrier frequency for ASK	84

THIS PAGE HAS BEEN INTENTIONALLY LEFT BLANK.

Keysight U2761A USB Modular Function/  
Arbitrary Waveform Generator  
User's Guide

# 1 Getting Started

Introduction	20
Product at a Glance	21
Product Dimensions	23
Standard Purchase Items	25
Inspection and Maintenance	26
Installation and Configuration	27
Activate Your Device License	30

This chapter provides the introduction of the Keysight U2761A that helps you get acquainted with the product and the product outlook. This chapter also includes the installation and configuration procedures that will help you get started with the Keysight U2761A.

## Introduction

The Keysight U2761A is a 20 MHz USB modular function generator with Arbitrary waveform and pulse generation capabilities. It can operate as a standalone unit or as part of a modular unit when used with the U2781A USB modular instrument chassis.

The Keysight U2761A adopts the latest direct digital synthesis (DDS) technology that digitally creates Arbitrary waveforms and frequencies from a single, fixed source frequency. DDS offers the precision of a digital control logic; reducing the complexity of the generator while increasing the stability. Thus, creating a stable, accurate output signal for clean, low distortion sine waves with fast rise and fall time up to 20 MHz and linear Ramp waves up to 200 kHz.

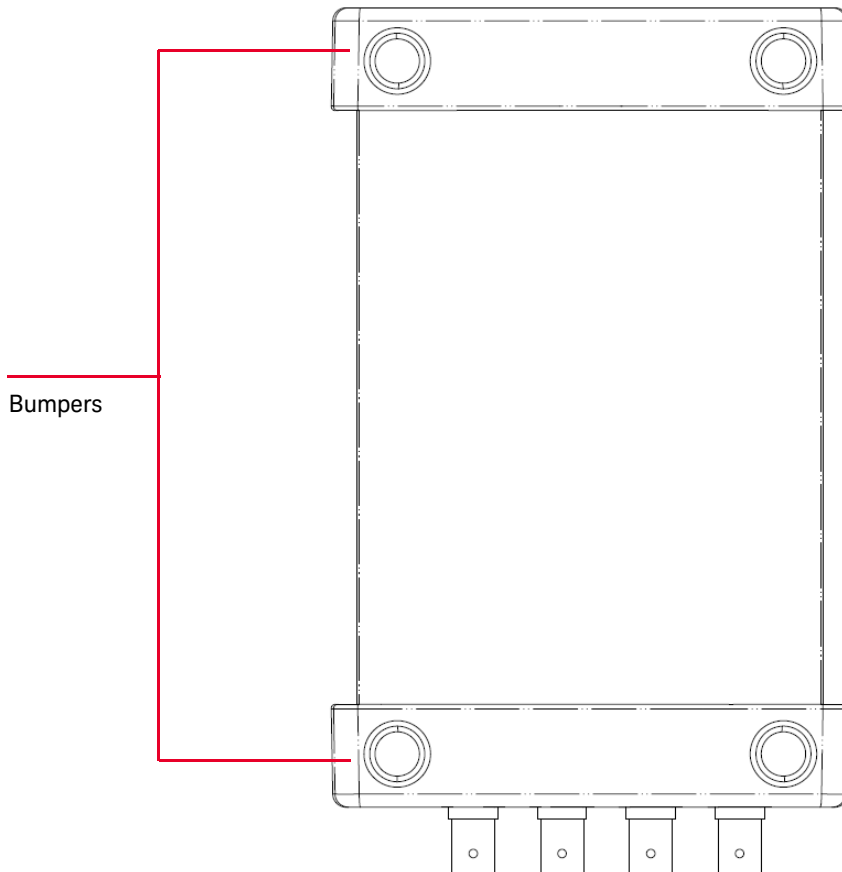
### Various features of the U2761A

- 20 MHz Sine and Square waveforms
- Hi-Speed 2.0, USBTMC 488.2 standards
- Sine, Square, Ramp, Triangle, Pulse, and DC waveforms
- 14-bit, 50 MSa/s, 64 K-point Arbitrary waveforms
- AM, FM, PM, ASK, FSK, and PSK modulation types
- 40 mVpp to 5 Vpp amplitude range for 50  $\Omega$  load, and 80 mVpp to 10 Vpp amplitude range for open circuit
- Pulse generation
- 2 MHz maximum frequency for Arbitrary waveforms, with option U2010A

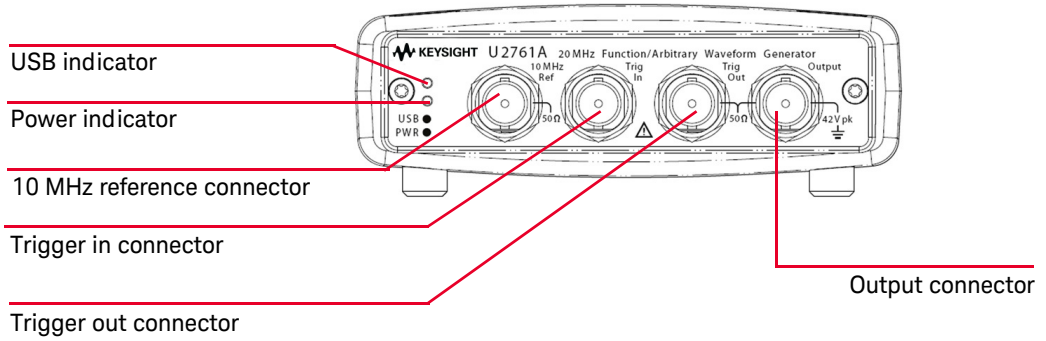
# Product at a Glance

## Product Outlook

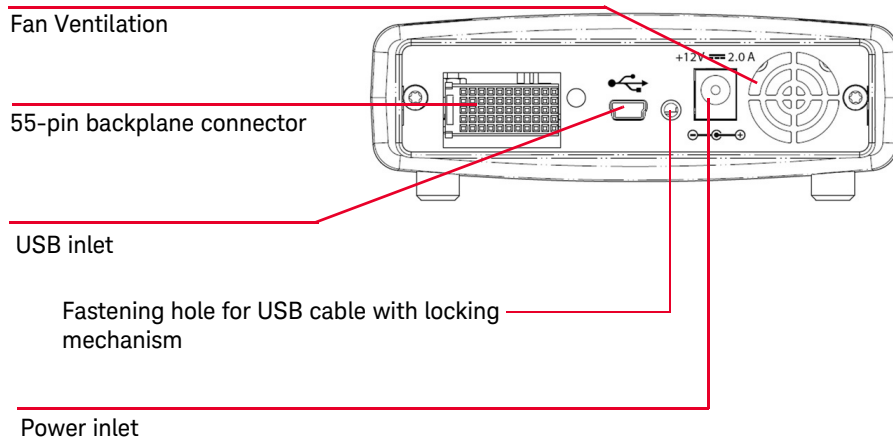
### Top View



### Front View



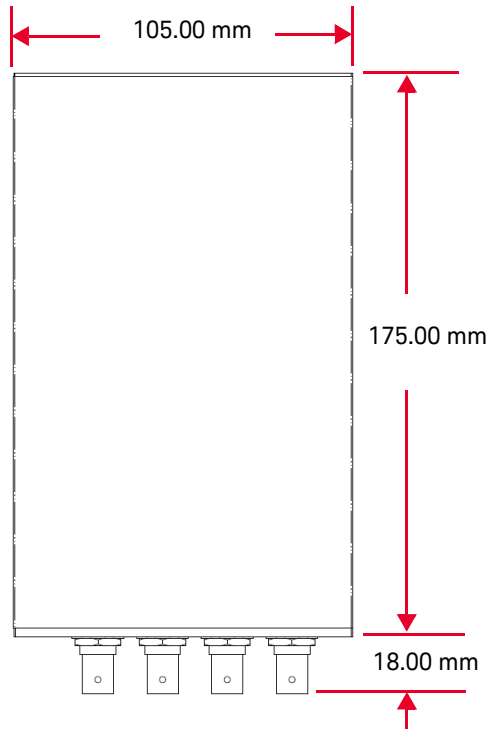
### Rear View



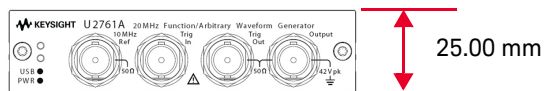
# Product Dimensions

## Dimensions Without Bumpers

Top View

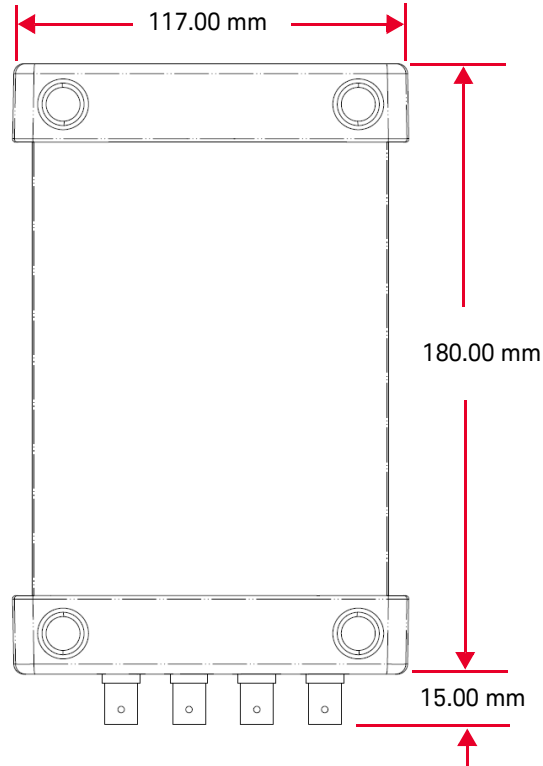


Front View

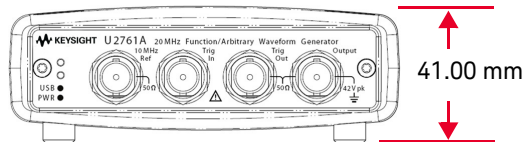


## Dimensions With Bumpers

Top View



Front View





## Standard Purchase Items

Verify the following items for the standard purchase of the U2761A. If there are any missing or mechanically damaged items, contact the nearest Keysight Sales Office.

- ✓ 12 V, 2 A AC/DC power adapter
- ✓ Power cord
- ✓ USB Standard-A to Mini-B interface cable
- ✓ L-Mount kit (used with modular instrument chassis)
- ✓ Keysight Automation-Ready CD-ROM (contains the IO Libraries Suite)
- ✓ Keysight USB Modular Products and Systems Quick Start Guide
- ✓ Keysight USB Modular Products and Systems Product Reference DVD-ROM
- ✓ Keysight Measurement Manager Quick Reference Card
- ✓ Certificate of Calibration

## Inspection and Maintenance

### Initial Inspection

When you receive your Keysight U2761A, inspect the unit for any obvious damage such as broken terminals or cracks, dents, and scratches on the casing that may occur during shipment. If any damage is found, notify the nearest Keysight Sales Office immediately. The front of this manual contains the warranty information.

Keep the original packaging in case the Keysight U2761A has to be returned to Keysight in the future. If you return the Keysight U2761A for service, attach a tag identifying the owner and model number. Also include a brief description of the problem.

### Electrical Check

The *Keysight U2761A USB Modular Function/Arbitrary Waveform Generator Service Guide* will provide the complete verification and calibration procedures. The procedures will verify to a high level of confidence that the Keysight U2761A is operating in accordance with its specifications.

### General Maintenance

#### NOTE

**Any repair that is not covered in your modular product manuals should only be performed by qualified personnel.**

- 1 Power off your module and remove the power cord and I/O cable from your device.
- 2 Remove your module from the bumper casing.
- 3 Shake off any dirt that may have accumulated on the module.
- 4 Wipe your module with a dry cloth and install the bumper back in place.

## Installation and Configuration

Follow the step-by-step instructions shown in the *Keysight USB Modular Products and Systems Quick Start Guide* to get started with the preparations and installations of your Keysight U2761A.

**NOTE**

You need to install the IVI-COM driver if you are going to use the Keysight U2761A with Keysight VEE Pro, LabVIEW, or Microsoft® Visual Studio®.

---

## 55-Pin Backplane Connector Pin Configuration

The 55-pin backplane connector is used when the Keysight U2761A module is inserted into the U2781A USB modular instrument chassis. For more details, refer to the *Keysight U2781A USB Modular Instrument Chassis User's Guide*.

GND	GND	GND	GND	GND	GND	GND	GND	GND	GND	GND	F
NC	NC	NC	NC	NC	NC	NC	NC	VBUS	GND	USB_D-	E
GND	TRIG3	GND	TRIG2	GND	TRIG1	GND	TRIG0	GND	GND	USB_D+	D
TRIG4	GND	TRIG5	GND	TRIG6	GND	TRIG7	GND	+12 V	+12 V	GND	C
nBPUB	CLK10M	GND	STAR_TRIG	GA2	GA1	GA0	NC	+12 V	+12 V	+12 V	B
NC	NC	NC	NC	NC	NC	NC	NC	+12 V	+12 V	+12 V	A
11	10	9	8	7	6	5	4	3	2	1	

**Figure 1-1** 55-pin backplane connector pin configuration

**Table 1-1** Synchronous Simultaneous Interface (SSI) connector pin description

SSI timing signal	Functionality
GND	Ground
NC	Not connected
VBUS	USB bus power sensing input
USB_D+, USB_D-	USB differential pair
TRIG0~TRIG7	Trigger bus
+12 V	+12 V power with 4 A current
nBPUB	USB backplane input detect
CLK10M	10 MHz clock source
STAR_TRIG	Star trigger
GA0,GA1,GA2	Geographical address pin

## Chassis Installation

The L-mount kit is to be installed to your Keysight U2761A module. The following instructions describe the simple procedure of installing the L-mount kit and your module in the U2781A chassis.

- 1** Unpack the L-mount kit from its packaging.
- 2** Remove your Keysight U2761A module from the bumper casing.
- 3** Using a Phillips screwdriver, fasten the L-Mount kit to your Keysight U2761A module.
- 4** Insert your Keysight U2761A module into the U2781A chassis with the 55-pin backplane connector positioned at the bottom of the module.
- 5** Once you have slotted the module into the chassis, tighten the screws of the L-mount kit to secure the connection.

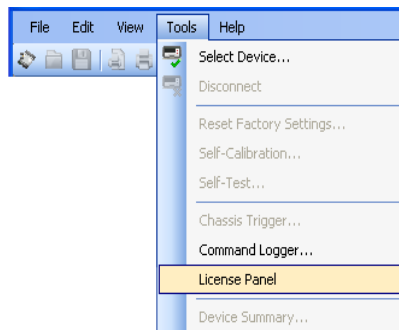
## Activate Your Device License

If you have purchased a Keysight U2761A with option U2010A, you are required to activate the device license before you can use its additional feature in the Keysight Measurement Manager. You may activate the device license through the Software Licensing application.

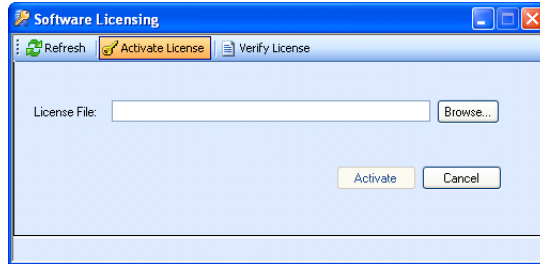
The following instructions will guide you through on how to use the Software Licensing application.

### To Activate Your Device License

- 1 Go to **Tools > License Panel**.



- The Software Licensing window will appear with the Activate License tab as the active tab.

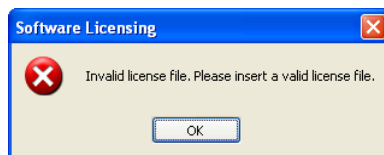


- Ensure that the device you want to activate is connected to your PC and is powered on.
- Click **Browse...** to locate your device license key (\*.lic).

#### NOTE

If you do not have a device license key (\*.lic), you will need to redeem your device license key at [www.keysight.com/find/softwarelicense](http://www.keysight.com/find/softwarelicense). Follow the on-screen instructions to redeem a valid license key for your device.

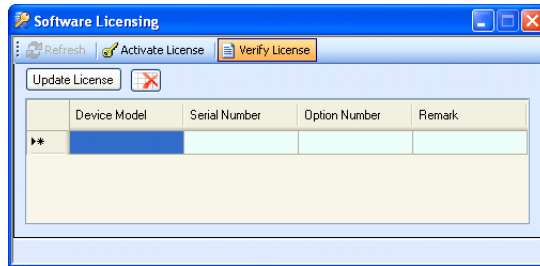
- Select your device license key and click **Open**.
- Click **Activate** to verify your device license. If successful, the “License Activation completed” message will be displayed in the status bar.
- If an invalid license key is used, a warning message will appear as shown below when you click **Activate**.



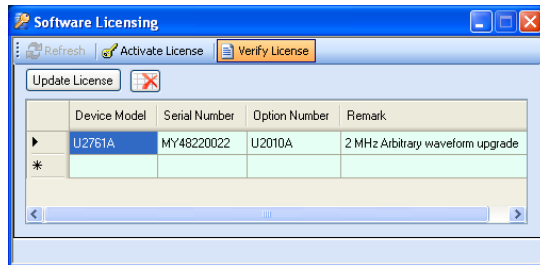
- Click **OK** and ensure that a valid license key is selected before you click **Activate**.


## To Verify your Device License

- 1 Go to **Tools > License Panel**.
- 2 The Software Licensing window will appear with the Activate License tab as the active tab.
- 3 Select the **Verify License** tab as the active tab.



- 4 Ensure that the device(s) you want to verify is connected to your PC.
- 5 Click **Update License**. The device model, serial number, and option number will be displayed with a valid license.



- 6 Click the Clear Table icon () to clear the Verify License table.



## 2 Features and Functions

Output Configuration	34
Pulse Waveform	51
Amplitude Modulation (AM)	55
Frequency Modulation (FM)	61
Phase Modulation (PM)	67
Frequency-Shift Keying (FSK) Modulation	72
Phase-Shift Keying (PSK) Modulation	77
Amplitude-Shift Keying (ASK) Modulation	82
Frequency Sweep	86
Triggering	91
Arbitrary Waveforms	97

In this chapter, you will learn about the functions and features offered by the Keysight U2761A.

## Output Configuration

### Introduction

This section contains the information to help you configure the U2761A for outputting waveforms. You may not need to change some of the parameters discussed here, but they are provided so that you will have accessibility when needed.

### Output Function

The U2761A can output five standard waveforms (Sine, Square, Ramp, Triangle, and Pulse), and DC. You can select one of the three built-in Arbitrary waveforms or create your own custom waveforms. In addition, you can internally modulate Sine, Square, Ramp, Triangle, and Arbitrary waveforms using AM, FM, PM, FSK, PSK, or ASK. The linear or logarithmic frequency sweeping is available for Sine, Square, Ramp, Triangle, and Arbitrary waveforms.

The table below shows which output functions are allowed with modulation and sweep. Each “V” indicates a valid combination. If you change to a function that is not applicable for modulation, or sweep; then the modulation or mode will be disabled.

**Table 2-1** Output functions

	Sine	Square	Ramp	Triangle	Pulse	DC	Arbitrary
<b>AM, FM, PM, FSK, PSK, ASK Carrier</b>	V	V	V	V			V
<b>AM, FM, PM Internal Modulation</b>	V	V	V	V			V
<b>FSK, PSK, ASK Internal Modulation</b>		V					
<b>Sweep Mode</b>	V	V	V	V			V

### Function Limitation

If you change to a function where the maximum frequency is less than the current function, the frequency will be adjusted to the maximum value for the new function.

For example, if you are currently outputting a 20 MHz sine wave and then change to the Ramp function, the U2761A will automatically adjust the output frequency to 200 kHz (the upper limit for Ramp).

### Amplitude Limitation

If you change to a function where the maximum amplitude is less than the current function, the amplitude will automatically be adjusted to the maximum value for the new function. This may occur when the output units are Vrms or dBm due to the differences in crest factor for the various output functions.

For example, if you output a 2.5 Vrms Square wave (into 50  $\Omega$ ) and then change to the Sine wave function, the U2761A will automatically be adjusted the output amplitude to 1.768 Vrms (the upper limit for Sine wave in Vrms).

### Soft Front Panel Operation

The following figure shows the soft front panel of the U2761A.

Waveform pattern selection

Waveform parameters

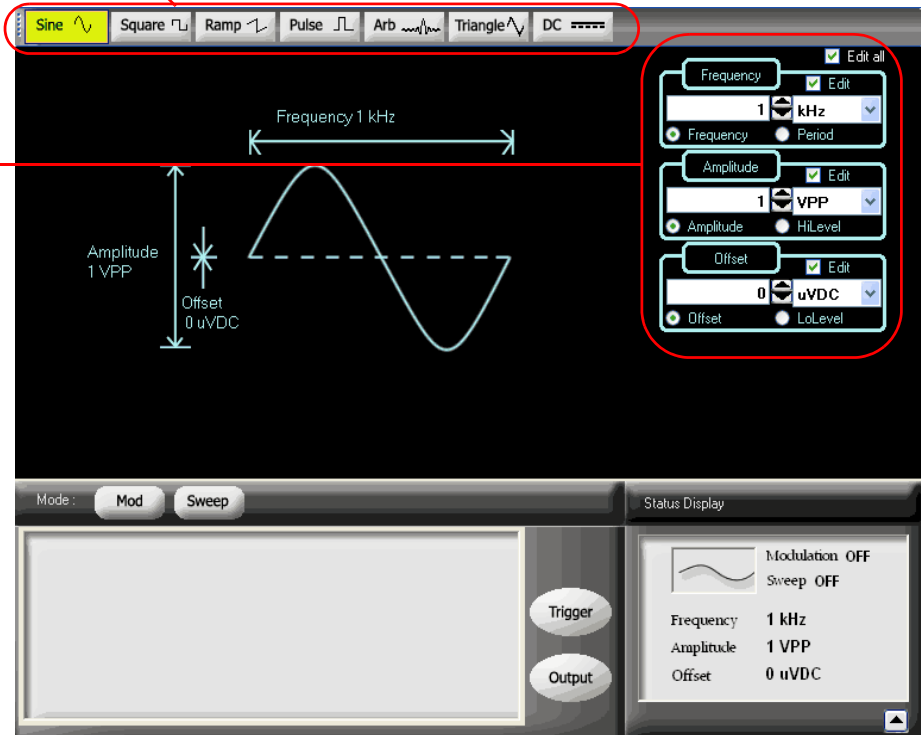
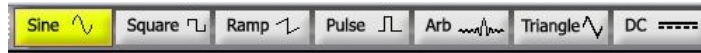

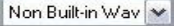


Figure 2-1 U2761A soft front panel

To select a function, click any of the functions on the top panel as shown below. When a function is selected, the button will be illuminated.



**Figure 2-2** Top panel view of the U2761A

Click **Arb**  to output the Arbitrary waveform. Select other Arbitrary waveform choices from the drop down list .

### Remote Interface Operation

`FUNcTion {SINusoid|SQUare|RAMP|PULSe|DC|USER}`

You can also use the **APPLY** command to select the function, frequency, amplitude, and offset.

## Output Frequency

As shown below, the output frequency range depends on the function currently selected. *The default frequency is 1 kHz for all functions.*

**Table 2-2** Output frequency range

Function	Minimum frequency	Maximum frequency
Sine	1 $\mu$ Hz	20 MHz
Square	1 $\mu$ Hz	20 MHz
Ramp, Triangle	1 $\mu$ Hz	200 kHz
Pulse	500 $\mu$ Hz	5 MHz
DC	Not applicable	Not applicable
Arbitrary	1 $\mu$ Hz	200 kHz 2 MHz (Option U2010A)

### Function Limitations

If you change to a function where the maximum frequency is less than the current function, the frequency will be adjusted to the maximum value for the new function.

For example, if you are currently outputting a 20 MHz sine wave and then change to the Ramp function, the U2761A will automatically adjust the output frequency to 200 kHz (the upper limit for Ramp).

### Duty Cycle Limitations


For Square waveforms, the U2761A may not be able to use the full range of duty cycle values at higher frequencies as shown below.

- 20% to 80% (frequency  $\leq$  10 MHz)
- 40% to 60% (frequency  $>$  10 MHz)

If you change to a frequency that cannot produce the current duty cycle, the duty cycle is automatically adjusted to the maximum value for the new frequency.

For example, if you currently have the duty cycle set to 70% and then change the frequency to 12 MHz, the U2761A will automatically adjust the duty cycle to 60% (the upper limit for this frequency).

### Soft Front Panel Operation

On the Frequency panel as shown in [Figure 2-3](#), input the desired frequency value and select the unit from the drop down list. To set the waveform period instead, select **Period**  **Period**.



**Figure 2-3** Panel view of the frequency section

## Remote Interface Operation

**FREQuency** <frequency>

You can also use the **APPLY** command to select the function, frequency, amplitude, and offset.

## Output Amplitude

*The default amplitude is 1 Vpp (into 50 Ω) for all functions.*

### Offset Voltage Limitations

The relation between the output amplitude and offset voltage is shown below.  $V_{max}$  is the maximum peak voltage for the selected output termination (5 V for a 50 Ω load or 10 V for a high-impedance load).

$$V_{pp} \leq 2 \times (V_{max} - |V_{offset}|)$$

### Limits Due to Output Termination

If you change the output termination setting, the value of the output amplitude will be adjusted (and no error will be generated).

For example, if you set the amplitude to 5 Vpp and then change the output termination from 50 Ω to “high impedance”, the amplitude value will double to 10 Vpp. If you change from “high impedance” to 50 Ω, the displayed amplitude value will drop to half. For more information, see [“Output Termination”](#) on page 43.

### Limits Due to Units Selection

In some cases, the amplitude limits are determined by the output units selected. This may occur when the units are Vrms or dBm due to the differences in crest factor for the various output functions.

For example, if you output a 2.5 Vrms Square wave (into 50  $\Omega$ ) and then change to the Sine wave function, the U2761A will automatically adjust the output amplitude to 1.768 Vrms (the upper limit for Sine wave in Vrms).

You can set the output amplitude in Vpp, Vrms, or dBm. For more information, see “Output Units” on page 42.

You cannot specify the output amplitude in dBm if the output termination is set to “high impedance”.

### Soft Front Panel Operation

On the Amplitude panel as shown in Figure 2-4, input the desired amplitude value and select the unit from the drop down list.



**Figure 2-4** Panel view of the amplitude section

### Remote Interface Operation

VOLTage <amplitude>

Or, you can set the amplitude by specifying a high level and low level using the following commands.

VOLTage:HIGH <voltage>

VOLTage:LOW <voltage>

You can also use the **APPLY** command to select the function, frequency, amplitude, and offset.



## DC Offset Voltage

The default offset is 0 V for all functions.

### Limits Due to Amplitude

The relation between the offset voltage and output amplitude is shown below.  $V_{max}$  is the maximum peak voltage for the selected output termination (5 V for a 50  $\Omega$  load or 10 V for a high-impedance load).

$$|V_{offset}| \leq V_{max} - \frac{V_{pp}}{2}$$

If the specified offset voltage is not valid, the U2761A will automatically adjust it to the maximum DC voltage allowed with the specified amplitude.

### Soft Front Panel Operation

On the Offset panel as shown in [Figure 2-5](#), input the desired offset value and select the unit from the drop down list.



**Figure 2-5** Panel view of the DC offset section

### Remote Interface Operation

**VOLTage:OFFSet <offset>**

Or, you can set the offset by specifying a high level and low level using the following commands.

**VOLTage:HIGH <voltage>**

**VOLTage:LOW <voltage>**

You can also use the **APPLY** command to select the function, frequency, amplitude, and offset.

## Output Units

*This configuration applies to output amplitude only. At power-on, the units for output amplitude are volts peak-to-peak.*

- The output units consist of Vpp, Vrms, or dBm. *The default unit is Vpp.*
- The unit setting is stored in volatile memory. The units are set to “Vpp” upon power-off or after a remote interface reset.
- The output units for amplitude cannot be set to dBm if the output termination is currently set to “high impedance”. The units are automatically converted to Vpp.

### Soft Front Panel Operation

On the Amplitude panel as shown in [Figure 2-4](#), input the desired amplitude value and select the unit from the drop down list.

### Remote Interface Operation

`VOLTage:UNIT {VPP|VRMS|DBM}`

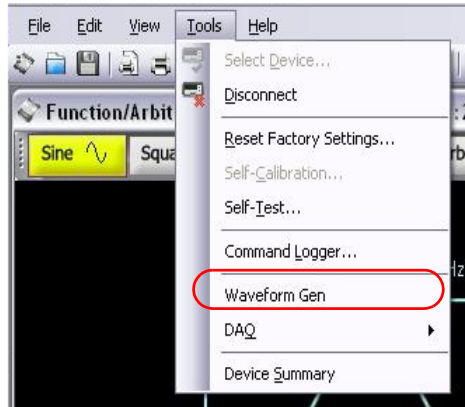
## Output Termination

This configuration applies to output amplitude and offset voltage only. The Keysight U2761A has a fixed series output impedance of  $50\ \Omega$  to the device output connector. If the actual load impedance is different from the specified value, the amplitude and offset levels will be incorrect.


- The range of the output termination is  $1\ \Omega$  to  $10\ \text{k}\Omega$ , or Infinite. *The default value is  $50\ \Omega$ .*
- The output termination setting is stored in volatile memory and upon power-off or after a remote interface reset, the setting will return to a default value.
- If you specify a  $50\ \Omega$  termination but are actually terminating into an open circuit, the actual output will be twice the value specified. For example, if you set the offset to 100 mVDC (and specify a  $50\ \Omega$  load) but are terminating the output into an open circuit, the actual offset will be 200 mVDC.
- If you change the output termination setting, the output amplitude and offset levels are automatically adjusted (no error will be generated). For example, if you set the amplitude to 5 Vpp and then change the output termination from  $50\ \Omega$  to “high impedance”, the amplitude value will double to 10 Vpp. If you change from “high impedance” to  $50\ \Omega$ , the displayed amplitude value will drop to half.
- You cannot specify the output amplitude in dBm if the output termination is currently set to “high impedance”. The units are automatically converted to Vpp.

## Soft Front Panel Operation

Click **Tools** and select **Waveform Gen** as shown in the following.



**Figure 2-6** Panel view of the Tools menu

Then, select the **Output Setup** tab, input the desired load impedance value on the Impedance Load panel and select the unit from the drop down list, or select **High Z**  for high impedance load.

## Remote Interface Operation

```
OUTPut:LOAD {<ohms>|INFinity}
```

## Duty Cycle (Square Waves)

The duty cycle of a Square wave represents the amount of time per cycle that the Square wave is at a high level (assuming that the waveform is not inverted).



**Figure 2-7** Square wave duty cycles

Refer to “[Pulse Waveform](#)” on page 51 for the information on the duty cycle for Pulse waveforms.

### Duty Cycle

- 20% to 80% (frequency  $\leq$  10 MHz)
- 40% to 60% (frequency  $>$  10 MHz)

The duty cycle is stored in volatile memory where the duty cycle is set to default 50% upon power-off or after a remote interface reset.

The duty cycle setting is stored when you change from Square wave to another function. Thus, when you return to the Square function, the previous duty cycle is used.

### Limits Due to Frequency

If the Square wave function is selected and you change to a frequency that cannot produce the current duty cycle, the duty cycle is automatically adjusted to the maximum value for the new frequency.

For example, if you currently have the duty cycle set to 70% and then change the frequency to 12 MHz, the U2761A will automatically adjust the duty cycle to 60% (the upper limit for this frequency).

The duty cycle setting does not apply to a Square waveform used as the modulating waveform for AM, FM, or PM. A 50% duty cycle is always used for a modulating Square waveform. The duty cycle setting applies only to a Square waveform carrier.

### Soft Front Panel Operation

After selecting **Square** `Square` at the top panel as shown in [Figure 2-2](#), on the Duty Cycle panel below, input the desired duty cycle value.



**Figure 2-8** Panel view of the duty cycle section

### Remote Interface Operation

`FUNCTION:SQUare:DCYCl e <percent>`

The **APPLY** command automatically sets the duty cycle to 50%.

## Symmetry (Ramp Wave)

This configuration applies to Ramp wave only. Symmetry represents the amount of time per cycle that the Ramp wave is rising (assuming that the waveform is not inverted).



**Figure 2-9** Ramp wave duty cycles

- The symmetry percentage is stored in volatile memory where the symmetry is set to default 100% upon power-off or after a remote interface reset.
- The symmetry setting is stored when you change from Ramp wave to another function. Thus, when you return to the Ramp function, the previous symmetry is used.
- If you select a Ramp waveform as the *modulating* waveform for AM, FM, or PM, the symmetry setting does not apply.

### Soft Front Panel Operation

After selecting **Ramp** **Ramp** at the top panel as shown in [Figure 2-2](#), on the Symmetry panel below, input the desired symmetry value.




**Figure 2-10** Panel view of the symmetry section


### Remote Interface Operation

`FUNCTION:RAMP:SYMMetry <percent>`


The **APPLY** command automatically sets the symmetry to 100%.

### Output Control

You can disable or enable the soft front panel output control. By default, the output is disabled at power-on. When enabled, the **Output**  button is illuminated.

If an excessive external voltage is applied to the device output connector, the output will be disabled. To re-enable the output, remove the overload from the output connector and click **Output**  to enable the output.

### Soft Front Panel Operation

Click **Output**  to enable or disable the output as shown in [Figure 2-11](#).



**Figure 2-11** Panel view of the output section



## Remote Interface Operation

**OUTPUT {0|OFF|1|ON}**

The **APPLY** command overrides the current setting and automatically enables the output control.

## Set Output Using SCPI Commands

The following SCPI commands show a sample procedure of generating output.

### Example 1, To output a DC voltage

```
-> *CLS; *RST           //To reset the U2761A to default power-on state,
                        //this command can be ignored if this operation is not
                        //required.
-> FUNC DC              //Sets the output to DC.
-> VOLT:OFFS 1         //Sets the output DC offset voltage to 1 VDC.
-> OUTP:LOAD INF      //Changes the output termination to infinity.
-> OUTP ON            //Turns on output.
```

### Example 2, To output a Sine wave

```
-> *CLS; *RST           //To reset the U2761A to default power-on state,
                        //this command can be ignored if this operation is
                        //not required.
-> FUNC SIN            //Sets the output to Sine wave.
-> VOLT 5 VPP         //Sets the output amplitude to 5 Vpp.
-> FREQ 1000          //Sets the output frequency to 1 kHz.
-> VOLT:OFFS 0        //Sets the output offset to 0.
-> OUTP ON            //Turns on output.
```

### Example 3, To output a Square wave

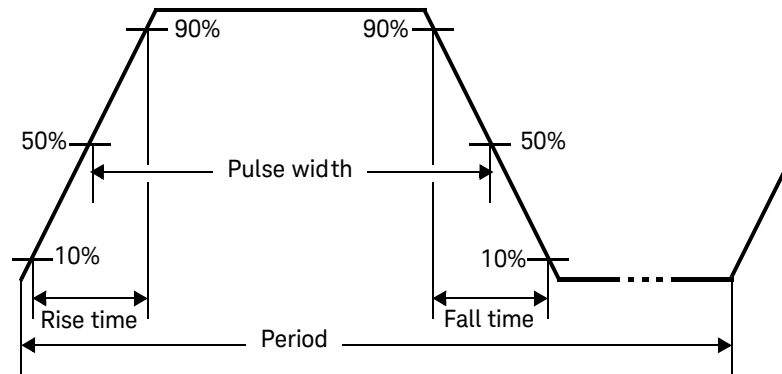
```
-> *CLS; *RST //To reset the U2761A to default power-on
state, this command can be ignored if this
operation is not required.
-> APPL:SQU 2000,5 VPP,0 //Sets the output to Square wave, frequency
2 kHz, amplitude 5 Vpp, offset 0.
-> FUNC:SQU:DCYC 30 //Changes the duty cycle to 30%.
-> OUTP ON //Turns on output.
```

### Example 4, To output a Ramp wave

```
-> *CLS; *RST //To reset the U2761A to default power-on
state, this command can be ignored if this
operation is not required.
-> FUNC RAMP //Sets the output to Ramp wave.
-> VOLT 5 VPP //Sets the output amplitude to 5 Vpp.
-> FREQ 10000 //Sets the output frequency to 10 kHz.
-> VOLT:OFFS 0 //Sets the output offset to 0.
-> FUNC:RAMP:SYMM 50 //Changes the symmetry to 50%.
-> OUTP ON //Turns on output.
```

## Pulse Waveform

As shown below, a Pulse waveform consists of a period, a pulse width, a rising edge, and a falling edge.





**Figure 2-12** Pulse waveform

## Pulse Period

The range of the pulse period is from 200 ns to 2000 s. *The default value is 1 ms.* The U2761A will adjust the pulse width as necessary to accommodate the specified period.

### Soft Front Panel Operation

After selecting **Pulse**  at the top panel as shown in [Figure 2-2](#), on the Frequency panel as shown in [Figure 2-3](#), select **Period** , input the desired pulse period value, and then select the unit from the drop down list.

### Remote Interface Operation

PULSe:PERiod <seconds>


## Pulse Width

The pulse width represents the time from the 50% threshold of the pulse's rising edge to the 50% threshold of the next falling edge.

- The range of the pulse width is 40 ns to <2000 s (see restrictions below). *The default pulse width is 500  $\mu$ s.*
- The minimum pulse width ( $W_{min}$ ) is affected by the period.
  - $W_{min} = 40 \text{ ns}$  for period  $\leq 10 \text{ s}$
  - $W_{min} = 200 \text{ ns}$  for period  $> 10 \text{ s}$ , but  $\leq 100 \text{ s}$
  - $W_{min} = 2 \text{ } \mu\text{s}$  for period  $> 100 \text{ s}$ , but  $\leq 1000 \text{ s}$
  - $W_{min} = 20 \text{ } \mu\text{s}$  for period  $> 1000 \text{ s}$
- The specified pulse width must also be less than the difference between the period and the minimum pulse width as shown in the equation below. The U2761A will adjust the pulse width as necessary to accommodate the specified period.

$$\text{Pulse Width} \leq \text{Period} - W_{min}$$

### Soft Front Panel Operation

After selecting **Pulse**  at the top panel as shown in [Figure 2-2](#), on the Width panel below, input the desired pulse width value and select the unit from the drop down list.



**Figure 2-13** Panel view of the pulse width section

### Remote Interface Operation

FUNCTION:PULSE:WIDTH <seconds>

## Pulse Duty Cycle

The pulse duty cycle is defined as:

$$\text{Duty Cycle} = 100 \times \text{Pulse Width} / \text{Period}$$

where the pulse width represents the time from the 50% threshold of the rising edge of the pulse to the 50% threshold of the next falling edge.

- Pulse duty cycle: >0% to <100% (see restrictions below). *The default is 50%.*
- The specified pulse duty cycle must conform to the following restrictions determined by the minimum pulse width (Wmin). The U2761A will adjust the pulse duty cycle as needed to accommodate the specified period.

$$\text{Duty Cycle} \geq 100 \times W_{\text{min}} / \text{Period}$$

and

$$\text{Duty Cycle} \leq 100 \times (1 - W_{\text{min}} / \text{Period})$$

where:

$$W_{\text{min}} = 40 \text{ ns for period } \leq 10 \text{ s.}$$

$$W_{\text{min}} = 200 \text{ ns for period } > 10 \text{ s, but } \leq 100 \text{ s.}$$

$$W_{\text{min}} = 2 \text{ } \mu\text{s for period } > 100 \text{ s, but } \leq 1000 \text{ s.}$$

$$W_{\text{min}} = 20 \text{ } \mu\text{s for period } > 1000 \text{ s.}$$

### Soft Front Panel Operation

After selecting **Pulse**  at the top panel as shown in [Figure 2-2](#), select

**Duty Cycle**  as shown in [Figure 2-13](#) and input the desired pulse duty cycle value on the Duty Cycle panel.

### Remote Interface Operation

**FUNCTION:PULSe:DCYCl e <percent>**

## Generate Pulse Waveform Using SCPI Commands

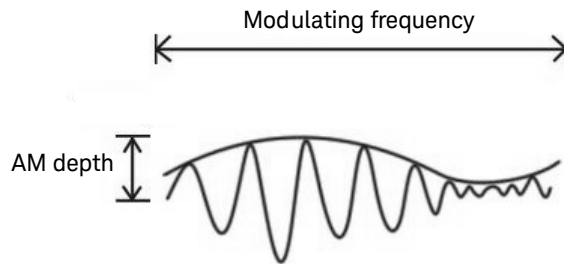
### Example 1

```
-> *CLS; *RST //To reset the Keysight U2761A to default
                power-on state, this command can be
                ignored if this operation is not required.

-> FUNC PULS //Sets the output to Pulse wave.
-> VOLT 5 VPP //Sets the output amplitude to 5 Vpp.
-> VOLT:OFFS 0 //Sets the output offset to 0.
-> PULS:PER 1 //Sets the pulse period to 1 s.
-> FUNC:PULS:DCYC 50 //Set the pulse duty cycle to 50%.
-> OUTP ON //Turns on output.
```

## Amplitude Modulation (AM)

A modulated waveform consists of a carrier waveform and a modulating waveform. An example of the AM waveform is shown in [Figure 2-14](#). In AM, the amplitude of the carrier is varied by the instantaneous voltage of the modulating waveform. The amount of amplitude modulation is called the modulation depth which refers to the portion of the amplitude range that will be used by the modulation.





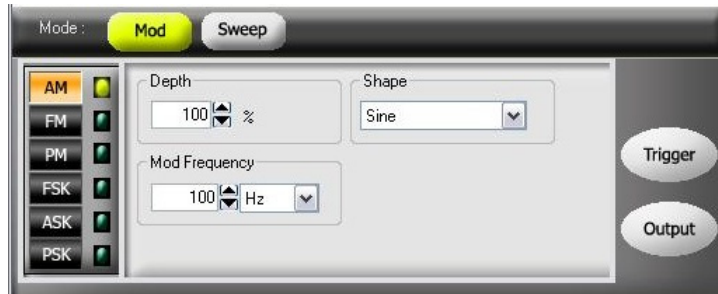
**Figure 2-14** AM waveform

### To Select AM

The U2761A allows only one modulation mode at a time. The U2761A does not allow modulation when sweep is enabled.

### Soft Front Panel Operation

Click **Mod**  and then select **AM**  as shown in [Figure 2-15](#). To output the AM waveform, configure the settings for the carrier frequency, modulating frequency, depth, output amplitude, offset voltage, and the desired waveform.



**Figure 2-15** Panel view of AM



### Remote Interface Operation

AM:STATE {0|OFF|1|ON}

### Carrier Waveform

The AM carrier waveform consists of Sine, Square, Ramp, Triangle, or Arbitrary waveform. *The default waveform is Sine wave.* You cannot use Pulse or DC as the carrier waveform.

### Soft Front Panel Operation

For Arbitrary waveform, select **Arb**  at the top panel as shown in [Figure 2-2](#) and then select the desired waveform from the drop down list  as shown in [Figure 2-16](#).





**Figure 2-16** Panel view of the Arbitrary waveform

### Remote Interface Operation

`FUNCTION {SINusoid|SQUare|RAMP|USER}`

You can also use the **APPLY** command to select the function, frequency, amplitude, and offset.

### Carrier Frequency

The maximum carrier frequency depends on the selected function as shown below. *The default frequency is 1 kHz for all functions.*

**Table 2-3** Carrier frequency for AM

Function	Minimum frequency	Maximum frequency
Sine	1 $\mu$ Hz	20 MHz
Square	1 $\mu$ Hz	20 MHz
Ramp, Triangle	1 $\mu$ Hz	200 kHz
Arbitrary	1 $\mu$ Hz	200 kHz 2 MHz (Option U2010A)

### Soft Front Panel Operation

On the Frequency panel as shown in [Figure 2-3](#), input the desired frequency value and select the unit from the drop down list.





### Remote Interface Operation

**FREQuency** <frequency>

You can also use the **APPLY** command to select the function, frequency, amplitude, and offset.

## Modulating Waveform

The modulating waveform consists of Sine, Square, Ramp, Negative Ramp (Nramp), Triangle, or Arbitrary waveform. *The default modulating waveform is Sine wave.*

- Square has 50% duty cycle 
- Ramp has 100% symmetry 
- Triangle has 50% symmetry 
- Negative Ramp has 0% symmetry 

### Soft Front Panel Operation

Select the desired modulating waveform from the drop down list  as shown in [Figure 2-15](#).

### Remote Interface Operation

**AM:INTernal:FUNCTION**  
{SINusoid|SQUare|RAMP|NRAMP|TRIangle|USER}

## Modulating Waveform Frequency

The range of the modulating waveform frequency is 2 mHz to 20 kHz. *The default modulating waveform frequency is 100 Hz.*

### Soft Front Panel Operation

On the Mod Frequency panel as shown in [Figure 2-15](#), input the desired modulating frequency value and select the unit from the drop down list.

### Remote Interface Operation

**AM:INTernal:FREQuency** <frequency>

## Modulation Depth

The modulation depth is expressed in percentage and represents the extent of the amplitude variation. At 0% depth, the output amplitude is half of the selected value. At 100% depth, the output amplitude equals the selected value.

The range of the modulation depth is 0% to 100%. *The default modulation depth is 100%.*

### NOTE

At 100% depth, the maximum output of the U2761A will not exceed  $\pm 2.5$  V peak (into a 50  $\Omega$  load).

### Soft Front Panel Operation

On the Depth panel as shown in [Figure 2-15](#), select the desired modulating depth value from the drop down list.

### Remote Interface Operation

**AM:DEPTH** <depth in percent>

## Generate AM Using SCPI Commands

### Example 1

```
-> *CLS; *RST //To reset the Keysight U2761A to default
                power-on state, this command can be
                ignored if this operation is not required.

-> AM:STAT ON // Enables AM.

-> FUNC SQU // Sets the carrier waveform to Square
            wave.

-> FREQ 2000 // Sets the carrier frequency to 2 kHz.

-> VOLT 5 VPP // Sets the output amplitude to 5 Vpp.

-> VOLT:OFFS 0 // Sets the output offset to 0.

-> AM:INT:FUNC SIN // Changes the modulating waveform
                  shape to Sine wave.

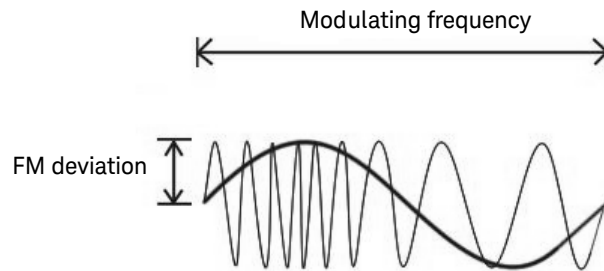
-> AM:INT:FREQ 500 // Changes the modulating frequency to
                  500 Hz.

-> AM:DEPT 50 // Changes the modulation depth to 50%.

-> OUTP ON // Turns on output.
```

## Frequency Modulation (FM)

A modulated waveform consists of a carrier waveform and a modulating waveform. Below shows an example of the FM waveform. In FM, the frequency of the carrier is varied by the instantaneous voltage of the modulating waveform. The variation in frequency of the modulated waveform from the carrier frequency is called the frequency deviation.





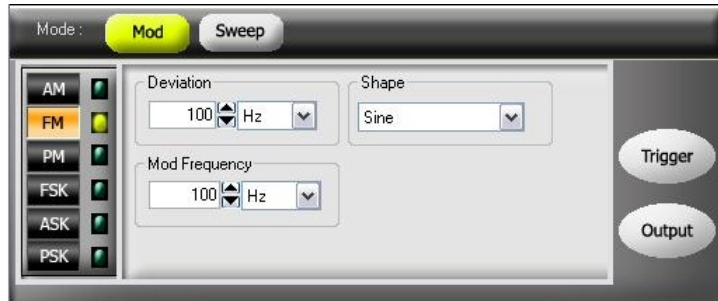
**Figure 2-17** FM waveform

### To Select FM

The U2761A allows only one modulation mode to be enabled at a time. The U2761A does not allow FM to be enabled at the same time that sweep is enabled.

## Soft Front Panel Operation

Click **Mod**  and then select **FM**  as shown in [Figure 2-18](#). To output the FM waveform, configure the settings for the carrier frequency, output amplitude, offset voltage, modulating frequency, deviation, and the desired waveform.



**Figure 2-18** Panel view of FM



## Remote Interface Operation

```
FM:STATE {0|OFF|1|ON}
```

## Carrier Waveform

The FM carrier waveform consists of Sine, Square, Ramp, Triangle, or Arbitrary waveform. *The default waveform is Sine wave. You cannot use Pulse or DC as the carrier waveform.*

## Soft Front Panel Operation

For Arbitrary waveforms, select **Arb**  at the top panel as shown in [Figure 2-2](#) and select the desired waveform from the drop down list  as shown in [Figure 2-16](#).

## Remote Interface Operation

```
FUNCTION {SINusoid|SQUare|RAMP|USER}
```

You can also use the **APPLY** command to select the function, frequency, amplitude, and offset.

## Carrier Frequency

The maximum carrier frequency depends on the selected function as shown below. *The default is 1 kHz for all functions.*

**Table 2-4** Carrier frequency for FM

Function	Minimum frequency	Maximum frequency
Sine	1 $\mu$ Hz	20 MHz
Square	1 $\mu$ Hz	20 MHz
Ramp, Triangle	1 $\mu$ Hz	200 kHz
Arbitrary	1 $\mu$ Hz	200 kHz 2 Mhz (Option U2010A)

The carrier frequency must always be greater than or equal to the frequency deviation plus 1  $\mu$ Hz. If you attempt to set the deviation to a value plus 1  $\mu$ Hz greater than the carrier frequency (with FM enabled), the U2761A will automatically adjust the deviation to the maximum value allowed with the present carrier frequency.

The sum of the carrier frequency and deviation must be less than or equal to the maximum frequency for the selected function (20 MHz for Sine and Square, 200 kHz for Ramp, and 200 kHz or 2 MHz with option U2010A for Arbitrary waveforms). If you attempt to set the deviation to a value that is not valid, the U2761A will automatically adjust it to the maximum value allowed with the present carrier frequency.

### Soft Front Panel Operation

On the Frequency panel as shown in [Figure 2-3](#), input the desired frequency value and select the unit from the drop down list.





### Remote Interface Operation

**FREQuency** <frequency>

You can also use the **APPLY** command to select the function, frequency, amplitude, and offset.

## Modulating Waveform

The modulating waveform consists of Sine, Square, Ramp, Negative Ramp (N Ramp), Triangle, Noise, or Arbitrary waveform. *The default modulating waveform is Sine wave.*

- Square has 50% duty cycle 
- Ramp has 100% symmetry 
- Triangle has 50% symmetry 
- Negative Ramp has 0% symmetry 

### Soft Front Panel Operation

Select the desired modulating waveform from the drop down list  as shown in [Figure 2-18](#).

### Remote Interface Operation

**FM:INTernal:FUNCTION**  
{SINusoid|SQUare|RAMP|NRAMP|TRIangle|USER}

## Modulating Waveform Frequency

The range of the modulating waveform frequency is 2 mHz to 20 kHz. *The default modulating waveform frequency is 100 Hz.*

### Soft Front Panel Operation

On the Mod Frequency panel as shown in [Figure 2-18](#), input the desired modulating frequency value and select the unit from the drop down list.

### Remote Interface Operation

**FM:INTernal:FREQUENCY** <frequency>



## Frequency Deviation

The frequency deviation setting represents the peak variation in frequency of the modulated waveform from the carrier frequency.

The range of the frequency deviation is 1 Hz to 500 kHz (limited to 100 kHz minus 1  $\mu$ Hz for Ramp and Arbitrary waveforms). *The default frequency deviation is 100 Hz.*

The carrier frequency must always be greater than or equal to the frequency deviation plus 1  $\mu$ Hz. If you attempt to set the deviation to a value plus 1  $\mu$ Hz greater than the carrier frequency (with FM enabled), the U2761A will automatically adjust the deviation to the maximum value allowed with the present carrier frequency.

The sum of the carrier frequency and deviation must be less than or equal to the maximum frequency for the selected function (20 MHz for Sine and Square, 200 kHz for Ramp, and 200 kHz or 2 MHz with option U2010A for Arbitrary waveforms). If you attempt to set the deviation to a value that is not valid, the U2761A will automatically adjust it to the maximum value allowed with the present carrier frequency.

### Soft Front Panel Operation

On the Deviation panel as shown in [Figure 2-18](#), input the desired frequency deviation value and select the unit from the drop down list.

### Remote Interface Operation

```
FM:DEVIation <peak deviation in Hz>
```

## Generate FM Using SCPI Commands

### Example 1

```
-> *CLS; *RST //To reset the Keysight U2761A to default
                power-on state, this command can be
                ignored if this operation is not required.

-> FM:STAT ON //Enables FM.

-> FUNC SIN //Sets the carrier waveform to Sine wave.

-> FREQ 1000 //Sets the carrier frequency to 1 kHz.

-> VOLT 5 VPP //Sets the output amplitude to 5 Vpp.

-> VOLT:OFFS 0 //Sets the output offset to 0.

-> FM:INT:FUNC SIN //Changes the modulating waveform shape
                   to Sine wave.

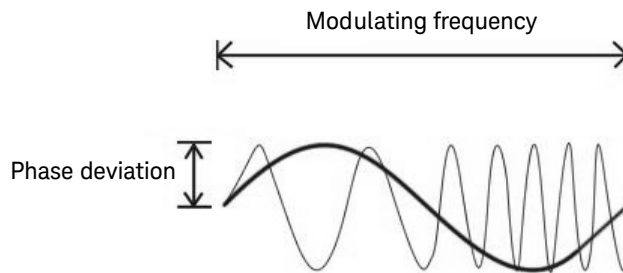
-> FM:INT:FREQ 500 //Changes the modulating frequency to
                   500 Hz.

-> FM:DEV 100 //Changes the frequency deviation to
              100 Hz.

-> OUTP ON //Turns on output.
```

## Phase Modulation (PM)

A modulated waveform consists of a carrier waveform and a modulating waveform. The following figure shows an example of a PM waveform. PM is very similar to FM, but in PM, the *phase* of the modulated waveform is varied by the instantaneous voltage of the modulating waveform. The variation in phase of the modulated waveform from the carrier waveform is called the phase deviation.





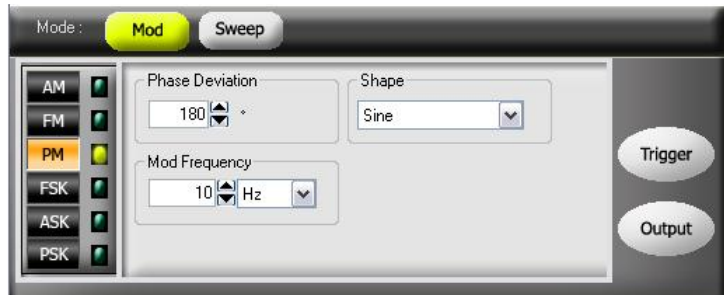
**Figure 2-19** PM waveform

### To Select PM

The U2761A allows only one modulation mode to be enabled at a time. The U2761A does not allow PM to be enabled at the same time that sweep is enabled.

#### Soft Front Panel Operation

Click **Mod**  and then select **PM**  as shown in [Figure 2-20](#). To output the PM waveform, configure the settings for the carrier frequency, output amplitude, offset voltage, modulating frequency, phase deviation, and the desired waveform.



**Figure 2-20** Panel view of PM



### Remote Interface Operation

`PM:STATE {0|OFF|1|ON}`

### Carrier Waveform

The PM carrier waveform consists of Sine, Square, Ramp, Triangle, or Arbitrary waveform. *The default waveform is Sine wave.* You cannot use Pulse or DC as the carrier waveform.

### Soft Front Panel Operation

For Arbitrary waveforms, click **Arb**  at the top panel as shown in [Figure 2-2](#) and select the desired waveform from the drop down list  as shown in [Figure 2-16](#).

### Remote Interface Operation

`FUNCTION {SINusoid|SQUare|RAMP|USER}`

You can also use the **APPLY** command to select the function, frequency, amplitude, and offset.

## Carrier Frequency

The maximum carrier frequency depends on the function selected as shown below. *The default carrier frequency is 1 kHz for all functions.*

**Table 2-5** Carrier frequency for PM

Function	Minimum frequency	Maximum frequency
Sine	1 $\mu$ Hz	20 MHz
Square	1 $\mu$ Hz	20 MHz
Ramp, Triangle	1 $\mu$ Hz	200 kHz
Arbitrary	1 $\mu$ Hz	200 kHz 2 Mhz (Option U2010A)

### Soft Front Panel Operation

On the Frequency panel as shown in [Figure 2-3](#), input the desired frequency value and select the unit from the drop down list.



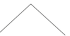

### Remote Interface Operation

**FREQuency** <frequency>

You can also use the **APPLY** command to select the function, frequency, amplitude, and offset.

## Modulating Waveform

The modulating waveform consists of Sine, Square, Ramp, Negative Ramp (N Ramp), Triangle, or Arbitrary waveform. *The default waveform is Sine wave.*

- Square has 50% duty cycle 
- Ramp has 100% symmetry 
- Triangle has 50% symmetry 
- Negative Ramp has 0% symmetry 

### Soft Front Panel Operation

Select the desired modulating waveform from the drop down list  as shown in [Figure 2-20](#).

### Remote Interface Operation

```
PM:INTernal:FUNCTION  
{SINusoid|SQUare|RAMP|NRAMP|TRIangle|USER}
```

## Modulating Waveform Frequency

The range of the modulating waveform frequency is 2 mHz to 20 kHz. *The default modulating waveform frequency is 10 Hz.*

### Soft Front Panel Operation

On the Mod Frequency panel as shown in [Figure 2-20](#), input the desired modulating frequency value and select the unit from the drop down list.

### Remote Interface Operation

```
PM:INTernal:FREQuency <frequency>
```

## Phase Deviation

The phase deviation setting represents the peak variation in phase of the modulated waveform from the carrier waveform. The phase deviation setting can be set from 0 to 360°. *The default phase deviation setting is 180°.*

### Soft Front Panel Operation

On the Phase Deviation panel as shown in [Figure 2-20](#), input the desired phase deviation value.

### Remote Interface Operation

**PM:DEVIation <deviation in degrees>**

## Generate PM Using SCPI Commands

### Example 1

```
-> *CLS; *RST //To reset the Keysight U2761A to default
                power-on state, this command can be
                ignored if this operation is not required.

-> PM:STAT ON //Enables PM.

-> FUNC SIN //Sets the carrier waveform to Sine wave.

-> FREQ 1000 //Sets the carrier frequency to 1 kHz.

-> VOLT 5 VPP //Sets the output amplitude to 5 Vpp.

-> VOLT:OFFS 0 //Sets the output offset to 0.

-> PM:INT:FUNC SIN //Changes the modulating waveform shape
                   to Sine wave.

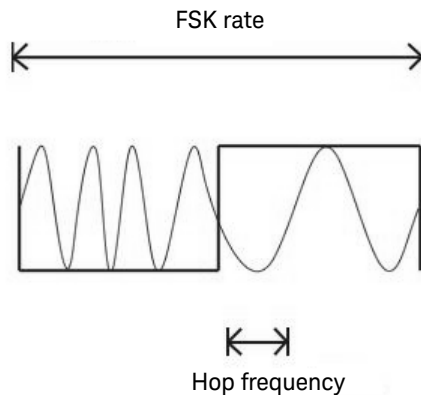
-> PM:INT:FREQ 500 //Changes the modulating frequency to
                   500 Hz.

-> PM:DEV 180 //Changes the phase deviation to 180°.

-> OUTP ON //Turns on output.
```

## Frequency-Shift Keying (FSK) Modulation

FSK is similar to FM except that the frequency alternates between two preset values. You can configure the U2761A to “shift” its output frequency between two preset values using FSK modulation. An example of the FSK modulation waveform is shown below. The rate at which the output shifts between the two frequencies (called the “carrier frequency” and the “hop frequency”) is determined by the internal rate generator.





**Figure 2-21** FSK modulation waveform

### To Select FSK Modulation

The U2761A allows only one modulation mode to be enabled at a time. The U2761A does not allow FSK to be enabled at the same time that sweep is enabled.

#### Soft Front Panel Operation

Click **Mod**  and select **FSK**  as shown in [Figure 2-22](#). To output the FSK waveform, configure the settings for the carrier frequency, output amplitude, offset voltage, “hop frequency”, and FSK rate.





**Figure 2-22** Panel view of FSK


### Remote Interface Operation

`FSKey:STATE {0|OFF|1|ON}`

### Carrier Waveform

The FSK carrier waveform consists of Sine, Square, Ramp, Triangle, or Arbitrary waveform. *The default carrier waveform is Sine wave. You cannot use Pulse or DC as the carrier waveform.*

### Soft Front Panel Operation

For Arbitrary waveforms, click **Arb**  at the top panel as shown in [Figure 2-2](#) and select the desired waveform from the drop down list `Non Built-in Wav` as shown in [Figure 2-16](#).

### Remote Interface Operation

`FUNCTION {SINusoid|SQUare|RAMP|USER}`

You can also use the **APPLY** command to select the function, frequency, amplitude, and offset.

## FSK Carrier Frequency

The maximum carrier frequency depends on the function selected as shown below. *The default carrier frequency is 1 kHz for all functions.*

**Table 2-6** Carrier frequency for FSK

Function	Minimum frequency	Maximum frequency
Sine	1 $\mu$ Hz	20 MHz
Square	1 $\mu$ Hz	20 MHz
Ramp, Triangle	1 $\mu$ Hz	200 kHz
Arbitrary	1 $\mu$ Hz	200 kHz 2 Mhz (Option U2010A)

### Soft Front Panel Operation

On the Frequency panel as shown in [Figure 2-3](#), input the desired frequency value and select the unit from the drop down list.

### Remote Interface Operation

**FRE**quency <frequency>

You can also use the **APPLY** command to select the function, frequency, amplitude, and offset.

## FSK “Hop” Frequency

The maximum alternate (or “hop”) frequency depends on the function selected as shown below. *The default “hop” frequency is 100 Hz for all functions.*

**Table 2-7** “Hop” frequency

Function	Minimum frequency	Maximum frequency
Sine	1 $\mu$ Hz	20 MHz
Square	1 $\mu$ Hz	20 MHz
Ramp, Triangle	1 $\mu$ Hz	200 kHz
Arbitrary	1 $\mu$ Hz	200 kHz 2 MHz (Option U2010A)

Only Square wave with a 50% duty cycle is available for the Internal FSK modulating waveform.

### Soft Front Panel Operation

On the Hop Frequency panel as shown in [Figure 2-22](#), input the desired hop frequency value and select the unit from the drop down list.

### Remote Interface Operation

FSKey:FREquency <frequency>

## FSK Rate

The FSK rate is the rate at which the output frequency “shifts” between the carrier frequency and the hop frequency.

- The range of the FSK rate is 2 mHz to 100 kHz. *The default FSK rate value is 10 Hz.*

### Soft Front Panel Operation

On the FSK Rate panel as shown in [Figure 2-22](#), input the desired FSK rate value and select the unit from the drop down list.

### Remote Interface Operation

**FSKey:INTernal:RATE <rate in Hz>**

## Generate FSK Modulation Using SCPI Commands

### Example 1

```
-> *CLS; *RST //To reset the Keysight U2761A to default
                power-on state, this command can be
                ignored if this operation is not required.

-> FSK:STAT ON // Enables FSK modulation.

-> FUNC SIN // Sets the carrier waveform to Sine wave.

-> FREQ 1000 // Sets the carrier frequency to 1 kHz.

-> VOLT 5 VPP // Sets the output amplitude to 5 Vpp.

-> VOLT:OFFS 0 // Sets the output offset to 0.

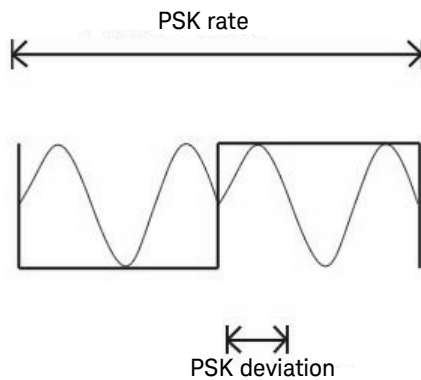
-> FSK:FREQ 100 // Sets the “hop” frequency to 100 Hz.

-> FSK:INT:RATE 10 // Sets the FSK rate to 10 Hz.

-> OUTP ON //Turns on output.
```

## Phase-Shift Keying (PSK) Modulation

Phase-shift keying (PSK) is a form of digital modulation in which the phase of the carrier signal is discretely varied. You can configure the U2761A to “shift” its output phase between two preset phases using PSK. The rate at which the output shifts between the two phases is determined by the internal rate generator on the signal level. The following figure shows an example of the PSK modulation waveform.





**Figure 2-23** PSK modulation waveform

### To Select PSK Modulation

The U2761A allows only one modulation mode to be enabled at a time. The U2761A does not allow PSK to be enabled at the same time that sweep is enabled.

#### Soft Front Panel Operation

Click **Mod**  and then select **PSK**  as shown in [Figure 2-24](#). To output the PSK waveform, configure the settings for the carrier frequency, output amplitude, offset voltage, deviation, and PSK rate.



**Figure 2-24** Panel view of PSK


### Remote Interface Operation

`PSKey:STATE {0|OFF|1|ON}`

### Carrier Waveform

The PSK carrier waveform consists of Sine, Square, Ramp, Triangle, or Arbitrary waveform. *The default waveform is Sine wave.* You cannot use Pulse or DC as the carrier waveform.

### Soft Front Panel Operation

For Arbitrary waveforms, select **Arb**  at the top panel as shown in [Figure 2-2](#) and select the desired waveform from the drop down list  as shown in [Figure 2-16](#).

### Remote Interface Operation

`FUNCTION {SINusoid|SQUare|RAMP|USER}`

You can also use the **APPLY** command to select the function, frequency, amplitude, and offset.

## PSK Carrier Frequency

The maximum carrier frequency depends on the function selected as shown below. *The default is 1 kHz for all functions.*

**Table 2-8** Carrier frequency for PSK

Function	Minimum frequency	Maximum frequency
Sine	1 $\mu$ Hz	20 MHz
Square	1 $\mu$ Hz	20 MHz
Ramp, Triangle	1 $\mu$ Hz	200 kHz
Arbitrary	1 $\mu$ Hz	200 kHz 2 Mhz (Option U2010A)

Only Square wave with a 50% duty cycle is available for the Internal PSK modulating waveform.

### Soft Front Panel Operation

On the Frequency panel shown in [Figure 2-3](#), input the desired frequency value and select the unit from the drop down list.

### Remote Interface Operation

**FRE**quency <frequency>

You can also use the **APPLY** command to select the function, frequency, amplitude, and offset.

## PSK Rate

The PSK rate is the rate at which the output phase “shifts” between two preset phases. The range of the PSK rate is 2 mHz to 100 kHz. *The default PSK rate value is 10 Hz.*

### Soft Front Panel Operation

On the PSK Rate panel as shown in [Figure 2-24](#), input the desired PSK rate value and select the unit from the drop down list.

### Remote Interface Operation

```
PSKey:INTernal:RATE <rate in Hz>
```

## PSK Deviation

The deviation setting represents the phase variation of the shifted waveform from the carrier waveform. The deviation can be set from 0 to 360°. *The default deviation setting is 180°.*

### Soft Front Panel Operation

On the Deviation panel as shown in [Figure 2-24](#), input the desired deviation value.

### Remote Interface Operation

```
PSKey:DEVIation <deviation in degrees>
```



## Generate PSK Modulation Using SCPI Commands

### Example 1

```
-> *CLS; *RST //To reset the Keysight U2761A to default
                power-on state, this command can be
                ignored if this operation is not required.

-> PSK:STAT ON // Enables PSK modulation.

-> FUNC SIN // Sets the carrier waveform to Sine wave.

-> FREQ 1000 // Sets the carrier frequency to 1 kHz.

-> VOLT 5 VPP // Sets the output amplitude to 5 Vpp.

-> VOLT:OFFS 0 // Sets the output offset to 0.

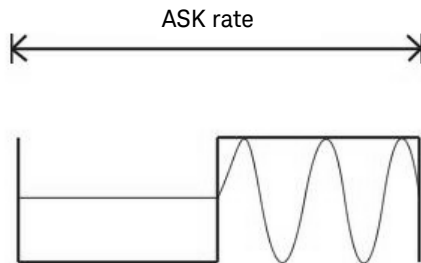
-> PSK:INT:RATE 10 // Sets the PSK rate to 10 Hz.

-> PSK:DEV 180 // Sets the PSK deviation to 180°.

-> OUTP ON // Turns on output.
```

## Amplitude-Shift Keying (ASK) Modulation

ASK is a form of digital modulation in which the modulating signal apply variations in the amplitude of a carrier signal. The amplitude of the carrier signal varies simultaneously with the modulating signal while phase and frequency remain constant. In other words, the carrier signal can be assumed as an on and off switch. You can configure the U2761A to “shift” its output amplitude between two preset amplitudes using ASK. The rate at which the output shifts between the two amplitudes is determined by the internal rate generator. An example of the ASK modulation waveform is shown in the following.





**Figure 2-25** ASK modulation waveform

### To Select ASK Modulation

The U2761A allows only one modulation mode to be enabled at a time. The U2761A does not allow ASK to be enabled at the same time that sweep is enabled.

#### Soft Front Panel Operation

Click **Mod**  and then select **ASK**  as shown in [Figure 2-26](#). To output the ASK waveform, configure the settings for the carrier frequency, output amplitude, offset voltage, and ASK rate.



**Figure 2-26** Panel view of ASK

### Remote Interface Operation

`ASKey:STATe {0|OFF|1|ON}`

### Carrier Waveform

The ASK carrier waveform consists of Sine, Square, Ramp, Triangle, or Arbitrary waveform. *The default waveform is Sine wave.* You cannot use Pulse or DC as the carrier waveform.

### Soft Front Panel Operation

For Arbitrary waveforms, select **Arb**  at the top panel as shown in

[Figure 2-2](#) and select the desired waveform from the drop down list  as shown in [Figure 2-16](#).

### Remote Interface Operation

`FUNCTion {SINusoid|SQUare|RAMP|USER}`

You can also use the **APPLY** command to select the function, frequency, amplitude, and offset.

## Carrier Frequency

The maximum carrier frequency depends on the function selected as shown below. *The default is 1 kHz for all functions.*

**Table 2-9** Carrier frequency for ASK

Function	Minimum frequency	Maximum frequency
Sine	1 $\mu$ Hz	20 MHz
Square	1 $\mu$ Hz	20 MHz
Ramp, Triangle	1 $\mu$ Hz	200 kHz
Arbitrary	1 $\mu$ Hz	200 kHz 2 Mhz (Option U2010A)

Only Square wave with a 50% duty cycle is available for the Internal ASK modulating waveform.

### Soft Front Panel Operation

On the Frequency panel as shown in [Figure 2-3](#), input the desired frequency value and select the unit from the drop down list.

### Remote Interface Operation

**FRE**quency <frequency>

You can also use the **APPLY** command to select the function, frequency, amplitude, and offset.

## ASK Rate

The ASK rate is the rate at which the output amplitude “shifts” between two preset amplitudes. The range of the ASK rate is 2 mHz to 100 kHz. *The default ASK rate value is 10 Hz.*

### Soft Front Panel Operation

On the ASK Rate panel as shown in [Figure 2-26](#), input the desired ASK rate value and select the unit from the drop down list.

### Remote Interface Operation

**ASKey:INTernal:RATE <rate in Hz>**

## Generate ASK Modulation Using SCPI Commands

### Example 1

```
-> *CLS; *RST //To reset the Keysight U2761A to
                //default power-on state, this command
                //can be ignored if this operation is not
                //required.

-> ASK:STAT ON // Enables ASK modulation.

-> FUNC SIN // Sets the carrier waveform to Sine
            // wave.

-> FREQ 1000 // Sets the carrier frequency to 1 kHz.

-> VOLT 5 VPP // Sets the output amplitude to 5 Vpp.

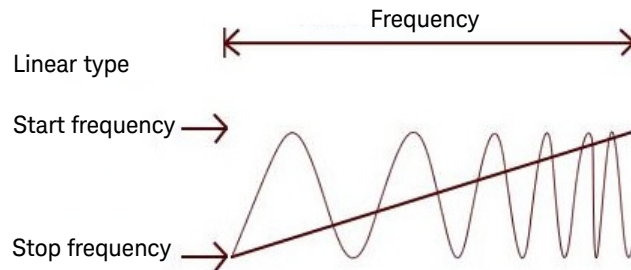
-> VOLT:OFFS 0 // Sets the output offset to 0.

-> ASK:INT:RATE 10 // Sets the ASK rate to 10 Hz.

-> OUTP ON //Turns on output.
```

## Frequency Sweep

In the frequency sweep mode, the U2761A “steps” from the start frequency to the stop frequency at a sweep rate which you specify. You can sweep up or down in frequency, and with either linear or logarithmic spacing. You can also configure the U2761A to output a single sweep (one pass from start frequency to stop frequency) by applying an External or Manual (software) trigger. The U2761A can produce a frequency sweep for Sine, Square, Ramp, Triangle, or Arbitrary’s waveform (Pulse and DC are not allowed). The figure below shows an example of the frequency sweep.




**Figure 2-27** Frequency sweep

### To Select Sweep

The U2761A does not allow the sweep mode to be enabled at the same time that any modulation mode is enabled.

#### Soft Front Panel Operation

Click **Sweep**  as shown in [Figure 2-28](#). To output sweep, configure the settings for frequencies, output amplitude, offset, sweep type and time, and trigger setup.



**Figure 2-28** Panel view of sweep

### Remote Interface Operation

`SWEep:STATe {0|OFF|1|ON}`

### Start Frequency and Stop Frequency

The start frequency and stop frequency sets the upper and lower frequency bounds for the sweep. The U2761A begins at the start frequency, sweeps to the stop frequency, and then resets back to the start frequency.

- The range of the start and stop frequencies is 1  $\mu$ Hz to 20 MHz (limited to 200 kHz for Ramp and 200 kHz or 2 MHz with option U2010A for Arbitrary waveforms). The sweep is phase-continuous over the full frequency range. *The default start frequency is 100 Hz. The default stop frequency is 1 kHz.*
- To sweep **up** in frequency, set the start frequency < stop frequency. To sweep **down** in frequency, set the start frequency > stop frequency.

### Soft Front Panel Operation

On the Start Frequency and Stop Frequency panels as shown in [Figure 2-28](#), input the desired *start frequency* and *stop frequency* values and select the respective units from the drop down lists.

### Remote Interface Operation

`FREquency:START <frequency>`

`FREquency:STOP <frequency>`

## Sweep Mode

You can sweep with either linear or logarithmic spacing. For a *linear* sweep, the U2761A varies the output frequency in a linear fashion during the sweep. For a *logarithmic* sweep, the U2761A varies the output frequency in a logarithmic fashion.

The sweep mode consists of Linear or Logarithmic. *The default sweep mode is Linear.*

### Soft Front Panel Operation

On the Sweep Type panel as shown in [Figure 2-28](#), select the Linear  or Log  mode.

### Remote Interface Operation

`SWEEp:SPACing {LINear|LOGarithmic}`

## Sweep Time

The sweep time specifies the number of seconds required to sweep from the start frequency to the stop frequency. The number of discrete frequency points in the sweep is automatically calculated by the U2761A and is based on the sweep time you have selected. The range of the sweep time is 1 ms to 500 s. *The default sweep time is 1 s.*

### Soft Front Panel Operation

On the Sweep Time panel as shown in [Figure 2-28](#), input the desired sweep time and select the unit from the drop down list.


### Remote Interface Operation

`SWEEp:TIME <seconds>`



## Sweep Trigger Source

In the sweep mode, the U2761A outputs a single sweep when a trigger signal is received. After one sweep from the start frequency to the stop frequency, the U2761A will continuously output the preset waveform at the start frequency while waiting for the next trigger.

- The sweep trigger source consists of Internal (immediate), External, or Manual (software). *The default trigger source is Internal.*
- When the *Internal* source is selected, the U2761A outputs a continuous sweep at a rate determined by the specified sweep time.
- When the *External* source is selected, the U2761A accepts a hardware trigger applied to the device Trig In connector. The U2761A initiates one sweep each time Trig In receives a TTL pulse with the specified polarity.
- When the *Manual* source is selected, the U2761A outputs one sweep each time the soft front panel **Trigger**  is clicked.

### Soft Front Panel Operation

On the Trigger Setup panel as shown in [Figure 2-28](#), select the desired sweep trigger source from the drop down list  at the Source panel.

To specify whether the U2761A is triggered on the rising or falling edge of the signal from the Trig In connector, select **Positive**  Positive for rising edge triggering and **Negative**  Negative for falling edge triggering.

### Remote Interface Operation

```
TRIGger:SOURce {IMMediate|EXTernal|BUS}
```

Use the following command to specify whether the U2761A is triggered on the rising or falling edge of the signal from the Trig In connector.

```
TRIGger:SLOPe {POSitive|NEGative}
```

## Set Frequency Sweep Using SCPI Commands


### Example 1

```
-> *CLS; *RST //To reset the Keysight U2761A to default
                power-on state, this command can be
                ignored if this operation is not required.

-> FUNC SIN //Sets the carrier waveform to Sine wave.
-> VOLT 5 VPP //Sets the output amplitude to 5 Vpp.
-> VOLT:OFFS 0 //Sets the output offset to 0.
-> SWE:STAT ON //Enables frequency sweep.
-> FREQ:STAR 500 //Changes the start frequency to 500 Hz.
-> FREQ:STOP 10000 //Changes the stop frequency to 10 kHz.
-> SWE:SPAC LIN //Changes the sweep mode to Linear.
-> SWE:TIME 2 //Changes the sweep time to 2 s.
-> TRIG:SOUR EXT //Changes the sweep trigger source to
                External.
-> TRIG:SLOP POS //Changes the U2761A to be triggered on
                the rising edge.
-> OUTP ON //Turns on output.
```

## Triggering

*Applies to sweep only.* You can issue triggers for sweeps using *Internal* (immediate) triggering, *External* triggering, or *Manual* (software) triggering.

- *Internal* triggering is enabled when you turn on the U2761A. In this mode, the U2761A outputs continuously when the sweep mode is selected.
- *External* triggering uses the device Trig In connector to control the sweep. The U2761A initiates one sweep each time Trig In receives a TTL pulse. You can select whether the U2761A is triggered on the rising or falling edge of the External trigger signal.
- *Manual* triggering initiates one sweep each time you click **Trigger**  on the soft front panel.

## Trigger Source Choices

You must specify the source from which the U2761A accepts a trigger.

- The sweep trigger source consists of Internal, External, or Manual. *The default trigger source is Internal.*
- The U2761A accepts a Manual trigger, a hardware trigger from the device Trig In connector, or continuously output sweeps using an Internal trigger. At power-on, Internal trigger is selected.
- The trigger source setting is stored in volatile memory where the source is set to Internal (immediate) trigger upon power-off or after a remote interface reset.

### Soft Front Panel Operation

On the Trigger Setup panel as shown in [Figure 2-28](#), select the desired trigger source from the drop down list  at the Source panel.


### Remote Interface Operation

```
TRIGger:SOURce {IMMediate|EXTernal|BUS}
```

## Internal Triggering

In the Internal trigger mode, the U2761A continuously performs frequency sweep (as specified by the sweep time). This is the default trigger source for both soft front panel and remote interface use.



### Soft Front Panel Operation

On the Trigger Setup panel as shown in [Figure 2-28](#), select **Internal** from the drop down list  at the Source panel.


### Remote Interface Operation

TRIGger:SOURce IMMEDIATE

## Manual Triggering

In the Manual (software) triggering mode, you can manually trigger the U2761A by clicking **Trigger** . The U2761A initiates one sweep each time you click the button. The **Trigger**  button is illuminated while the U2761A waits for a Manual trigger.

### Soft Front Panel Operation

On the Trigger Setup panel as shown in [Figure 2-28](#), select **Manual** from the drop down list  at the Source panel.

### Remote Interface Operation

TRIGger:SOURce BUS

When the **BUS** source is selected, send the **TRIG** or **\*TRG** command to trigger the U2761A.

## External Triggering

In the External trigger mode, the U2761A accepts a hardware trigger applied to the device Trig In connector. The U2761A initiates one sweep each time Trig In receives a TTL pulse with the specified edge.

Also refer to “[Trigger Input Signal](#)” on page 94.

### Soft Front Panel Operation

On the Trigger Setup panel as shown in [Figure 2-28](#), select **External** from the drop down list  at the Source panel.

To specify whether the U2761A is triggered on the rising or falling edge, select

**Positive**  Positive for triggering on the rising edge and **Negative**  Negative for triggering on the falling edge.

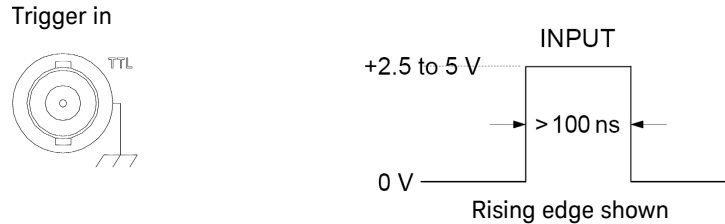
### Remote Interface Operation

**TRIGger:SOURce EXTernal**

Use the following command to specify whether the U2761A is triggered on the rising or falling edge.

**TRIGger:SLOPe {POSitive|NEGative}**

## Trigger Input Signal

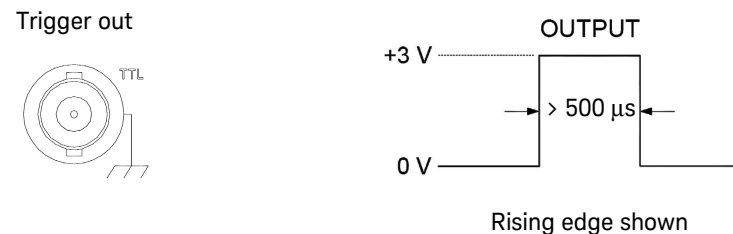


**Figure 2-29** Trigger input pulse

The device connector is used for Triggered Sweep Mode, refer to “[Sweep Trigger Source](#)” on page 89. When the rising or falling edge of the TTL pulse is received on the Trig In connector, the U2761A outputs a single sweep, refer to “[External Triggering](#)” on page 93.

## Trigger Output Signal

A “trigger out” signal is provided on the device Trig Out connector (*used with sweep only*). When enabled, a TTL-compatible Square waveform with either a rising (default) or falling edge is output to the device Trig Out connector at the beginning of the sweep.



**Figure 2-30** Trigger output pulse

When the *Internal* (immediate) trigger source is selected, the U2761A outputs a Square waveform with a 50% duty cycle to the Trig Out connector at the beginning of the sweep. The period of the Square waveform is equal to the specified sweep time.

When the *Manual* (software) trigger source is selected, the U2761A outputs a pulse to the Trig Out connector at the beginning of each sweep.

### Soft Front Panel Operation

After enabling sweep, to specify whether the Keysight U2761A outputs a TTL-compatible Square waveform with either a rising or falling edge, select

**Positive**  **Negative**  for rising edge and **Negative**  for falling edge.

### Remote Interface Operation

```
OUTPut:TRIGger {0|OFF|1|ON}
```

```
OUTPut:TRIGger:SLOPe {POSitive|NEGative}
```

## Set Triggering Using SCPI Commands

### Example 1

```
-> *CLS; *RST //To reset the Keysight U2761A to default
                power-on state, this command can be
                ignored if this operation is not required.
-> FUNC SIN //Sets the carrier waveform to Sine wave.
-> VOLT 5 VPP //Sets the output amplitude to 5 Vpp.
-> VOLT:OFFS 0 //Sets the output offset to 0.
-> SWE:STAT ON //Enables frequency sweep.
-> FREQ:STAR 500 //Changes the start frequency to 500 Hz.
-> FREQ:STOP 10000 //Changes the stop frequency to 10 kHz.
-> SWE:SPAC LIN //Changes the sweep mode to Linear.
-> SWE:TIME 2 //Changes the sweep time to 2 s.
-> TRIG:SOUR IMM //Changes the sweep trigger source to
                Internal.
-> OUTP:TRIG ON //Turns on the trigger output.
-> OUTP:TRIG:SLOP POS //Outputs the trigger on a rising edge.
-> OUTP ON //Turns on output.
```



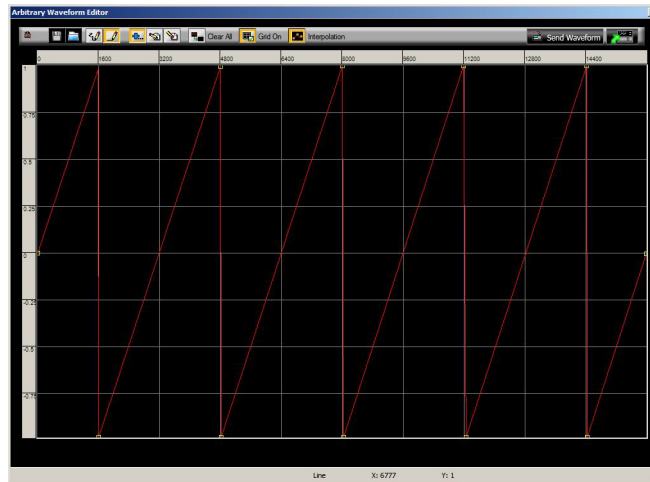
## Arbitrary Waveforms

There are three built-in Arbitrary waveforms offered. The U2761A supports the Arbitrary waveform up to 65536 (64K) data points. You can create an Arbitrary waveform using the soft front panel as described in the following. For further information, please refer to the *Keysight Measurement Manager help file*.

### To Create and Store an Arbitrary Waveform

This section provides you an example on the procedure to create and store an Arbitrary waveform using the soft front panel. To create an Arbitrary waveform remotely, refer to the *Keysight U2761A USB Modular Function/Waveform Generator Programmer's Reference*. You will create and store the Ramp waveform shown below as an example.

Amplitude = 2 Vpp, Period = 10 ms





**Figure 2-31** Ramp waveform

**1 Select the Arbitrary waveform function.**

Click **Arb**  to select the Arbitrary function.



**2 Set the waveform period.**

Select **Period**  and use the numeric keypad or numeric drop down  to set the period for the waveform.

For example, set the period of the waveform to 10 ms.



**3 Set the waveform voltage limits.**

Select **HiLevel**  and **LoLevel**  to set the high and low voltage levels that can be reached while editing the waveform. The upper limit *must* be greater than the lower limit.

For example, set the upper limit to 2.0 V and the lower limit to 0 V.


**4 Start the Arbitrary waveform editor.**

Select **Non Built-in Waveform** from the Arbitrary's drop down list





and click  to start the Arbitrary waveform editor.




**5 Select the interpolation method.**

Click  to enable or disable linear interpolation between the user-defined points. With interpolation enabled (default), the waveform editor makes a straight-line connection between the points. With interpolation disabled, the waveform editor maintains a constant voltage level between the points and creates a "step-like" waveform.


**6 Start waveform editing process.**

Click  to begin the freehand draw mode or  to enable line draw mode.

To enable or disable the grid reference, click . Then, start drawing the desired waveform. To edit the waveform, click either  to add line/point(s),

 to edit point(s),  to delete point(s), or  to clear current Arbitrary graph.

## 7 Sending waveform to the U2761A.

To send the waveform to the U2761A, click  **Send Waveform**. Once the **Send waveform in progress** has completed, the **Send waveform has completed** message is displayed.

### NOTE

The downloading of an Arbitrary waveform may take up to several minutes. The status bar at the bottom of the Arbitrary waveform editor window shows the progress of the download. Please wait for the **Send waveform has completed** message to be displayed before proceeding with the next step.

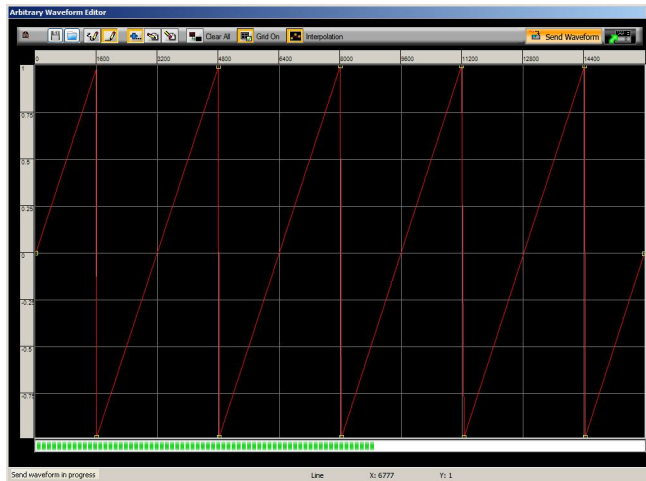




Figure 2-32 Waveform download in progress

## 8 Saving the waveform.

To save the waveform for future use, click . Then, select **Compatible With Intuilink** and click . Input the desired file name and click  to save the file.

## 9 Exiting the waveform editor.

To exit the waveform editor, click .

THIS PAGE HAS BEEN INTENTIONALLY LEFT BLANK.

# 3 Characteristics and Specifications

For the characteristics and specifications of the U2761A USB Modular Function/  
Arbitrary Waveform Generator, refer to the datasheet at  
<http://literature.cdn.keysight.com/litweb/pdf/5991-0413EN.pdf>.

THIS PAGE HAS BEEN INTENTIONALLY LEFT BLANK.

# Index

## A

AM, 20, 34, 47, 55, 56, 58, 60

- Carrier frequency, 57
- Carrier waveform, 56
- Modulating Waveform, 58
- Modulating waveform frequency, 59
- Modulation Depth, 59
- SCPI commands, 60
- Soft Front Panel Operation, 56

APPLY, 37, 39, 40, 41, 46, 48, 49, 57, 58, 62, 63, 68

Arbitrary waveform, 20, 34, 37, 56, 62, 68, 73, 78, 83, 97, 98

ASK, 20, 34, 82, 85

- carrier frequency, 84
- carrier waveform, 83
- rate, 85
- SCPI commands, 85
- soft front panel operation, 82

## B

bus trigger, 95

## C

carrier

- frequency, 57, 63, 69, 74, 79, 84
- waveform, 55, 56, 61, 62, 67, 68, 73, 78, 83

configuration

- output, 34, 42, 43
- pin, 28

## D

DC offset, 41

DDS, 20

depth, 55, 59, 60

deviation

frequency, 61, 63, 65, 66

phase, 67, 71

PSK, 80, 81

dimensions, 23, 24

duty cycle, 38, 45, 47, 50, 53, 54, 58, 64, 70, 94

## F

FM

- carrier frequency, 63
- carrier waveform, 62
- frequency deviation, 65
- modulating waveform, 64
- modulating waveform frequency, 64
- SCPI commands, 66

FSK

- "Hop" frequency, 75
- carrier frequency, 74
- carrier waveform, 73
- rate, 76
- SCPI commands, 76

I

installation

- chassis, 29

K

Keysight

- Automation-Ready CD, 25
- Measurement Manager, 97
- Sales Office, 25, 26
- VEE Pro, 27

L

limits

- amplitude, 35, 41
- duty cycle, 38
- frequency, 45
- function, 35, 38
- offset voltage, 39

output termination, 39

units selection, 40

L-Mount kit, 25, 29

## O

output

- amplitude, 39, 41, 42, 43
- control, 48
- frequency, 37
- function, 34
- SCPI commands, 49
- sweep, 86, 89
- termination, 43
- units, 42

## P

paragraph tags, 20

PM

- carrier frequency, 69
- carrier waveform, 68
- modulating waveform, 70
- modulating waveform frequency, 70
- phase deviation, 71
- SCPI commands, 71

product

- dimensions, 23
- outlook, 21

PSK

- carrier frequency, 79
- carrier waveform, 78
- deviation, 80
- rate, 80
- SCPI commands, 81

pulse

- duty cycle, 53
- period, 51
- SCPI commands, 54
- waveform, 51
- width, 52

## R

Ramp, 47, 50

## S

start frequency, 87

stop frequency, 87

Sweep, 86

sweep

mode, 88

SCPI commands, 90

time, 88

trigger source, 89

symmetry, 47

## T

tags

paragraphs, 20

triggering

External, 91, 93

input signal, 94

Internal, 91, 92, 94

Manual, 91, 92, 95

output signal, 94

SCPI commands, 96



